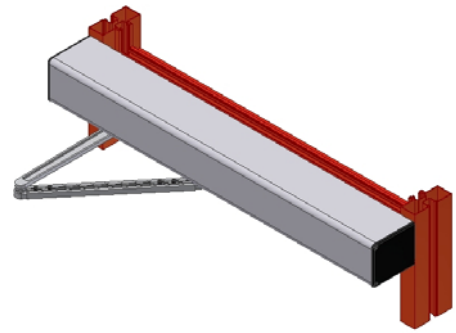
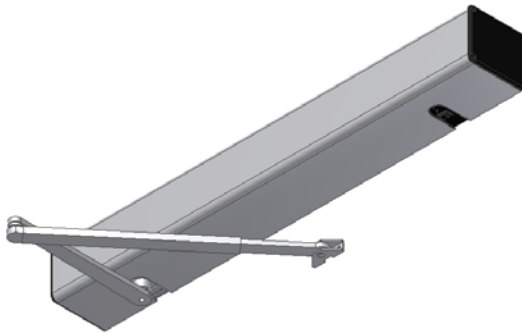




Record 8100SP

“The new standard for installer friendly, durable, high performance auto operators”



Features	Benefits
Ultra Quiet Operation	Great for noise sensitive areas
Works with any type hinge or pivot	Very versatile range of applications
Controls doors up to 350 lbs	Heavy duty operation for a variety of door sizes
Custom paint finishes available	Can be “Painted to match”
Pair operators in a single header	Architecturally appealing continuous sightline
Jamb-to-jamb mounting	Quick, easy mounting can be installed by a single person
Pre-drilled mounting holes	Greatly reduces installation time
Designed using Swiss technology	Reliable proven design for high cycle count applications
Auxiliary power available	No need for additional power supply in most cases
Electric lock relay control	Interfaces seamlessly with electric door hardware
Built-in supplemental door stop	Provides extra protection in high wind or abusive conditions
Latch assist function	Creates a power boost on close to overcome stack pressure
Knowledgeable tech support staff	Phone support for engineering, fabrication and field troubleshooting
Two year warranty	Low maintenance costs

The 8100SP low energy operator is specifically fabricated for Special Projects Group to allow for project specific customization. Combining a versatile design with rapid installation and superior technical support, creates a very reliable and high value solution for ADA entrances.

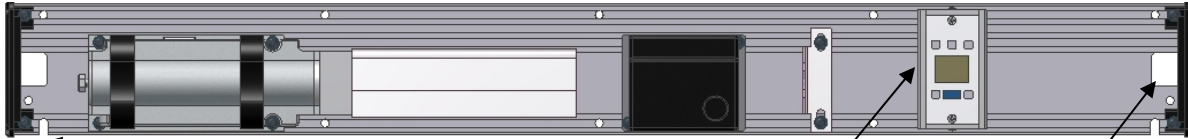
www.specialprojectsgroup.com

Phone: 678.417.8500 or 888.284.4774 Fax: 678.475.8448 or 866.281.3674



Record 8100SP

“The new standard for installer friendly, durable, high performance auto operators”



Slotted mounting hole at each end to simplify installation

Onboard Programmer Status Display

Cable access at both ends

Specifications

Electrical

Power Requirements	115 VAC 60 Hz
Current Draw	3.0A
Auxiliary Output Voltage	24 VDC 500mA
Fuse Type	Buss GMC 2.0A
Electric Lock Relay Type	Form “C” SPDT
Lock Relay Rating	5.0A @ 28 VDC

Parameters

Hold Open Time	1 sec to continuous
Push to Start	On/Off/Slow
Built-in-Stop	Set from 80° to 180°
Fire Alarm Input	Closes door on FA
Internal Display	S.M.A.R.T. LCD
Battery Backup Size	Min 1500VA
Memory Type	Flash Upgradeable
Boost on Close	Selectable On/Off

Dimensions

Size	5"h x 4-1/2"d x DOW + 3"	Adjustable Swing Degree	80° to 180°
Reveal	Up to 12" standard	Handing	Field Reversible
Max Door Weight	350 lbs		
Max Door Size	48" Single - 96" Pair		

Certifications

ANSI	A156.19
Warranty	2 years

Mechanical

Spring Adjustment	5 lbs to 20 lbs closing force
Max Degree of Swing	180°
On/Off/Hold Open Switch	Standard
Swing Direction	Inswing / Outswing
Operating Temperature	-40°F to +140°F

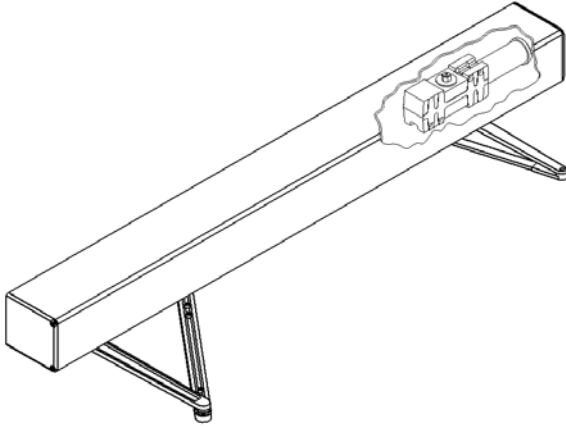
www.specialprojectsgroup.com

Phone: 678.417.8500 or 888.284.4774 Fax: 678.475.8448 or 866.281.3674



Record 8100SP-EHMC

“The new standard for installer friendly, durable, high performance auto operators”



Features	Benefits
Single operator with mechanical closer	Heavy Duty mechanical hydraulic closer for inactive leaf
Works with any type hinge or pivot	Very versatile range of applications
Controls doors up to 350 lbs	Heavy duty operation for a variety of door sizes
Custom paint finishes available	Can be “Painted to match”
Full length header for pairs of doors	Architecturally appealing continuous sightline
Jamb-to-jamb mounting	Quick, easy mounting can be installed by a single person
Ultra quiet operation	Great for noise sensitive areas
Designed using Swiss technology	Reliable proven design for high cycle count applications
Auxiliary power available	No need for additional power supply in most cases
Electric lock relay control	Interfaces seamlessly with electric door hardware
Built-in supplemental door stop	Provides extra protection in in high wind or abusive conditions
Latch assist function	Creates a power boost on close to overcome stack pressure
Knowledgeable tech support staff	Phone support for engineering, fabrication and troubleshooting
Two year warranty	Low maintenance costs

The 8100SP low energy operator is specifically fabricated for Special Projects Group to allow for project specific customization. Combining a versatile design with rapid installation and superior technical support, creates a very reliable and high value solution for ADA entrances.

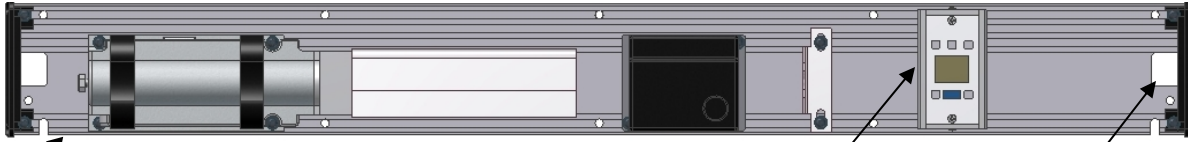
www.specialprojectsgroup.com

Phone: 678.417.8500 or 888.284.4774 Fax: 678.475.8448 or 866.281.3674



Record 8100SP-EHMC

“The new standard for installer friendly, durable, high performance auto operators”



Slotted mounting hole at each end to simplify installation

Onboard Programmer Status Display

Cable access at both ends

Specifications

<i>Electrical</i>		<i>Parameters</i>	
Power Requirements	115 VAC 60 Hz	Hold Open Time	1 sec to continuous
Current Draw	3.0A	Push to Start	On/Off/Slow
Auxiliary Output Voltage	24 VDC 500mA	Built-in-Stop	Set from 80° to 180°
Fuse Type	Buss GMC 2.0A	Fire Alarm Input	Closes door on FA
Electric Lock Relay Type	Form “C” SPDT	Internal Display	S.M.A.R.T. LCD
Lock Relay Rating	5.0A @ 28 VDC	Battery Backup Size	Min 1500VA
		Memory Type	Flash Upgradeable
<i>Dimensions</i>		Boost on Close	Selectable On/Off
Size	5"h x 4-1/2"d x DOW + 3"	Adjustable Swing Degree	80° to 180°
Reveal	Up to 12" standard	Handing	Field Reversible
Max Door Weight	350 lbs		
Max Door Size	48" Single - 96" Pair	<i>Certifications</i>	
		ANSI	A156.19
<i>Mechanical</i>		Warranty	2 years
Spring Adjustment	5 lbs to 20 lbs closing force (Operator Only)		
Max Degree of Swing	180° (Operator Only)		
On/Off/Hold Open Switch	Standard		
Swing Direction	Outswing Only		
Operating Temperature	-40°F to +140°F		
Mechanical Closer	Valve Adjustment for Swing, Latch and Backcheck		

www.specialprojectsgroup.com

Phone: 678.417.8500 or 888.284.4774 Fax: 678.475.8448 or 866.281.3674



SPECIAL PROJECTS GROUP, INC.

CHECKLIST FOR RECORD 8100 SP OPERATOR SURFACE MOUNT

Date: _____



Customer ID: _____

SPG SO#: _____

Project: _____

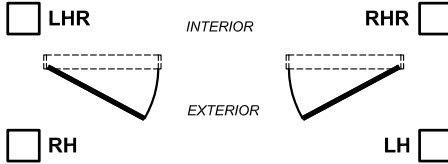
Please verify the information below for the operators to be used on this project. Please check the appropriate box for the finish, type of arm, and handing per the illustrations below. Specify the door opening dimension on the appropriate layout. If this is a curtain wall with a sub frame please include the sub framing dimension so the operator spindle can be located accordingly.

- FINISH**
- CLEAR ANODIZED COVER WITH PLATED AND ANODIZED ARM TO MATCH
- DARK BRONZE ANODIZED COVER WITH ARM PAINTED TO MATCH

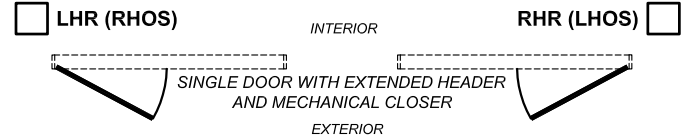
- ARM**
- PUSH ARM 
- TRACK ARM 



PUSH SIDE MOUNTING WITH STANDARD ARM

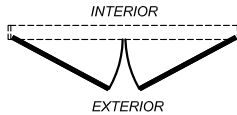


PUSH SIDE MOUNTING WITH STANDARD ARM X EHMC

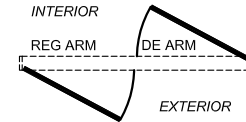


PULL SIDE MOUNTING WITH TRACK ARM

- PAIR OF DOORS**
- SIMULTANEOUS
- INDEPENDENT



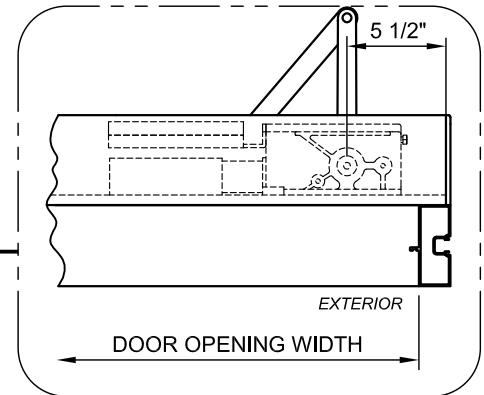
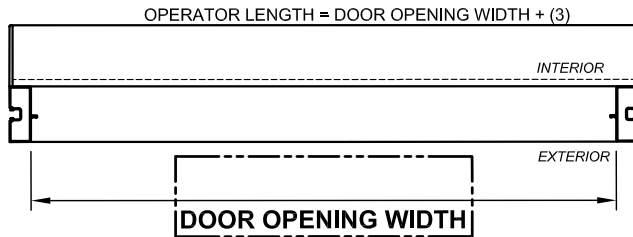
- DOUBLE EGRESS**
- SIMULTANEOUS
- INDEPENDENT



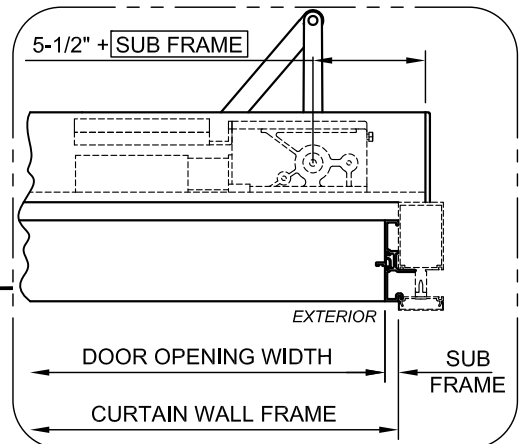
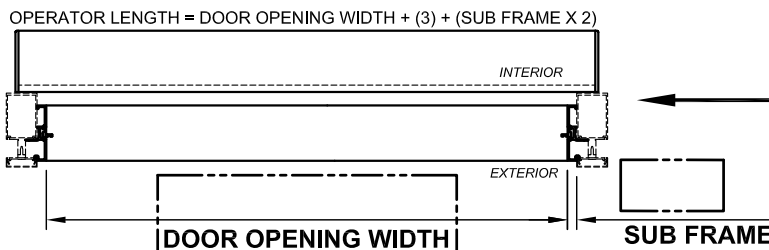
- HOLLOW METAL FRAMING

- STOREFRONT FRAMING

- CURTAIN WALL WITH FLUSH ADAPTOR



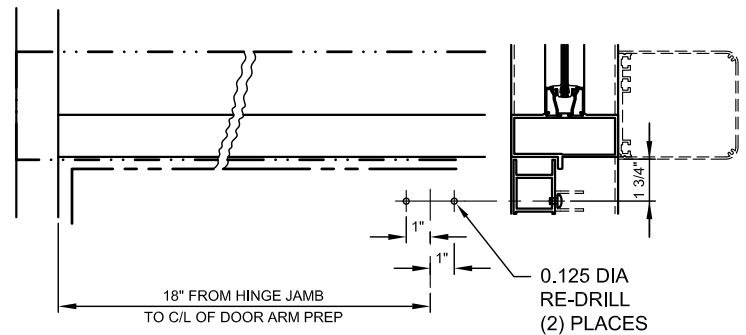
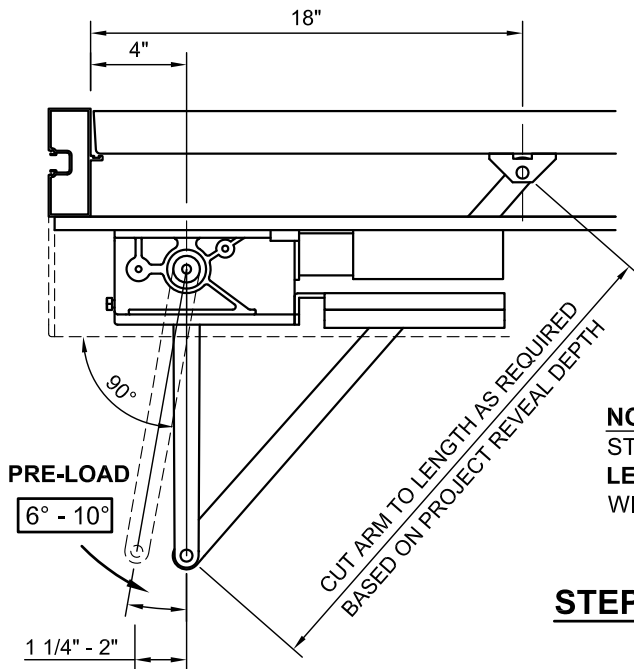
- CURTAIN WALL WITH SUB FRAME
(PLEASE INCLUDE SUB FRAME WIDTH)



NOTE:
PULL SIDE MOUNTING NOT RECOMMENDED ON ENTRANCES WITH CURTAIN WALL FRAMING

Record 8100SP operator Quick Start Instructions for Push Arm

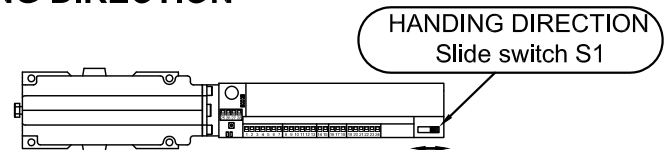
STEP 1 - ARM PRE-LOAD Arm installation to be completed prior to powering up the operator



NOTE:

STANDARD ARM ACCOMMODATES UP TO A 12" REVEAL. **MUST CUT TO LENGTH AS REQUIRED TO MAINTAIN 90° ANGLE FOR INSTALLATIONS WITH SMALLER REVEALS.**

STEP 2 - SWING DIRECTION

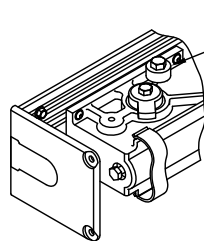
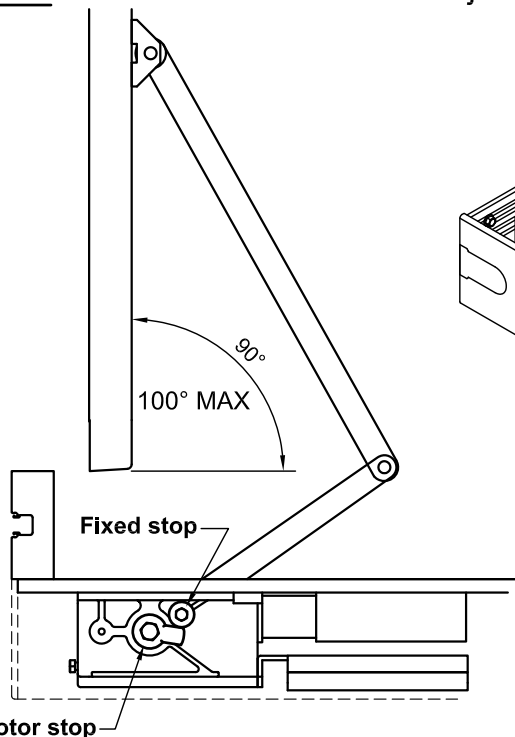


NOTE:

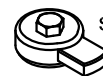
With **NO** power applied to the operator, attach the main arm to the motor allowing for a minimum of 6° pre-load and pull against motor resistance to make the final 90° connection to the door portion. Arm spindle adaptor has splines to allow for adjustment in 6° increments.

After attaching the arm if the operator does not close slowly when opened manually, the handing direction will need to be changed. With no power applied, slide switch to to change direction.

STEP 3 - OPEN STOP - Set the adjustable stop prior to conducting a calibration run.



Fixed stop is slightly eccentric; loosen fastener and rotate for smaller adjustments.



Motor stop is splined allowing for indexing in 6° increments. Rotate the fixed stop for smaller adjustment.

SETTING THE OPENING STOP

Pull door to desired open angle and set the spindle stop so that it contacts the fixed stop on the top of the motor.

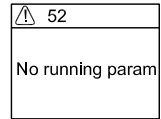
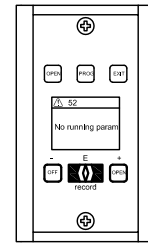
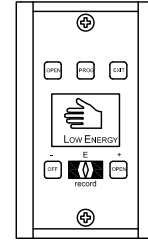
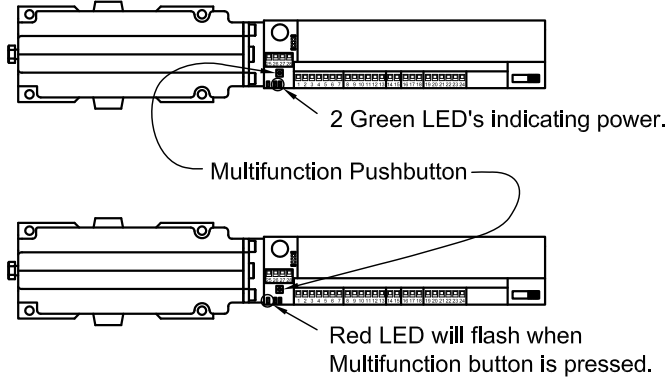


Record 8100SP operator Quick Start Instructions

STEP 4 - RESET and CALIBRATION

- Verify arm installed correctly and door operates properly mechanically.
- Apply 120VAC power to operator to allow for reset and calibration of operator.

Upon powering up the display at the end of the operator should read "LOW ENERGY" and two green LED's will light up.



RESET:

- Press and HOLD multifunction button for (8) red flashes.
- Display will reset and message ⚠ 52 "No run param" will appear.

NOTE:

- If pair operator reset master first then slave.

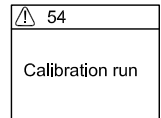
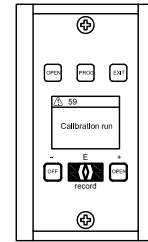
NOTE : On pair units you will need to set the slave control in programing after the resting process. Press and hold multifunction button for (4) red flashes. The display will change to the programing menu. Using "+" button scroll down to "Param Slave" / press Record button then scroll down to "Control Panel" / press Record button / Mech Panel - press Record button / scroll up to 3 POS Auto and press Record button to select / press "PROG" button until the exit programming screen is displayed / press Record button to exit.

CALIBRATION:

- Door MUST be calibrated before applying an activation.
- Verify the door is unlocked.
- Press and HOLD multi function button for (3) red flashes.
- Display will read ⚠ 54 "Calibration run".
- Door must complete one complete cycle with no obstructions.
- Display will show hand and "Low Energy"

NOTE:

- If pair operator calibrate master first then slave.

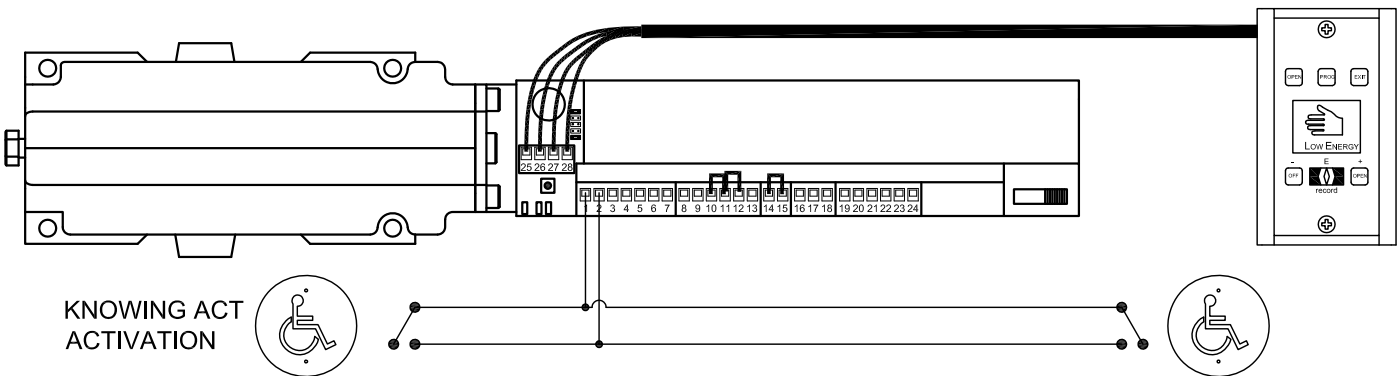
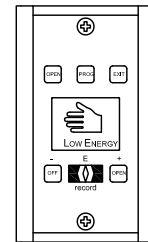


VERIFY CALIBRATION:

- With the door unlocked Press the multifunction button for (1) red flash.
- Door will swing to full open and return to closed position.

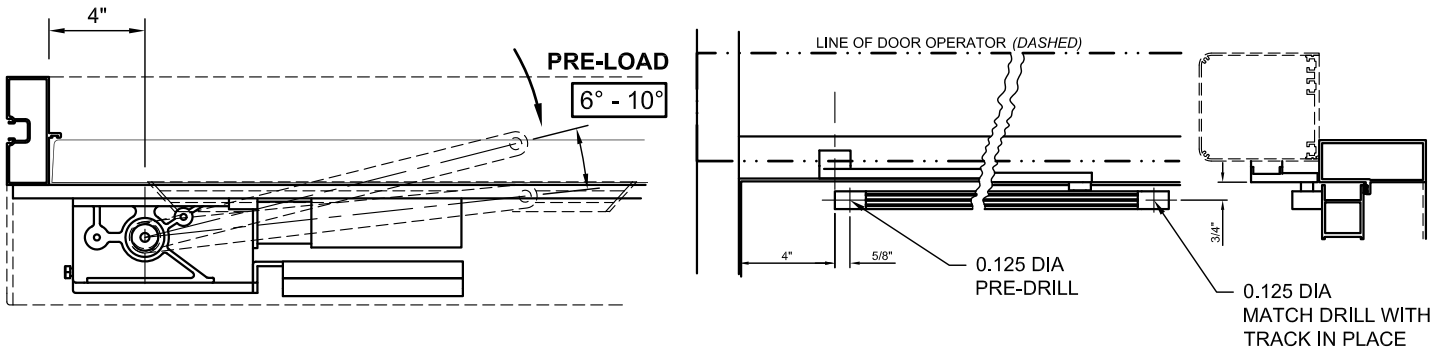
ACTIVATION:

- Connect wires from push button to terminals 1 and 2.



Record 8100SP operator Quick Start Instructions for Pull Track Arm

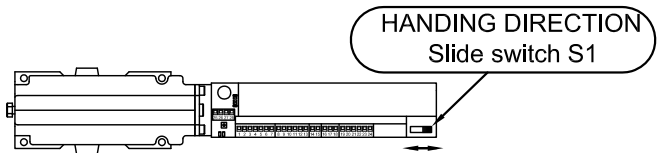
STEP 1 - ARM PRE-LOAD - Arm installation to be completed prior to powering up the operator



NOTE:

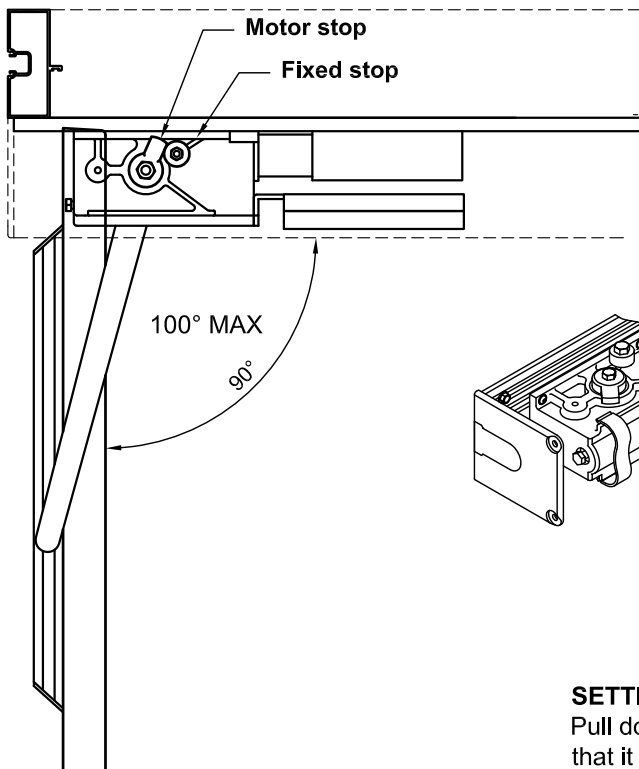
With **NO** power applied to the operator, attach the main arm to the motor allowing for a minimum of 6° pre-load and push with motor resistance to make the final connection to the door portion. Arm spindle adaptor has splines to allow for adjustment in 6° increments.

STEP 2 - SWING DIRECTION



After attaching the arm if the operator does not close slowly when opened manually, the handing direction will need to be changed. With no power applied, slide switch to to change direction.

STEP 3 - OPEN STOP - Set the adjustable stop prior to conducting a calibration run.



Fixed stop is slightly eccentric; loosen fastener and rotate for smaller adjustments.

Motor stop is splined allowing for indexing in 6° increments. Rotate the fixed stop for smaller adjustment.



SETTING THE OPENING STOP

Pull door to desired open angle and set the spindle stop so that it contacts the fixed stop on the top of the motor.

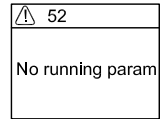
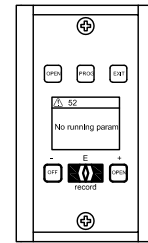
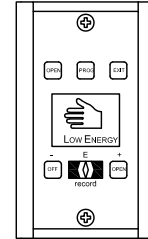
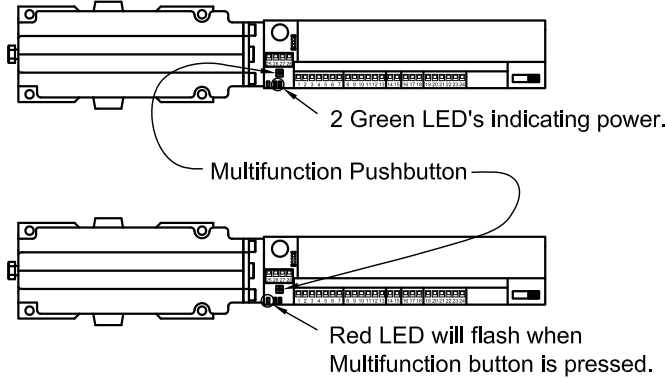


Record 8100SP operator Quick Start Instructions

STEP 4 - RESET and CALIBRATION

- Verify arm installed correctly and door operates properly mechanically.
- Apply 120VAC power to operator to allow for reset and calibration of operator.

Upon powering up the display at the end of the operator should read "LOW ENERGY" and two green LED's will light up.



RESET:

- Press and HOLD multifunction button for (8) red flashes.
- Display will reset and message ⚠ 52 "No run param" will appear.

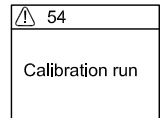
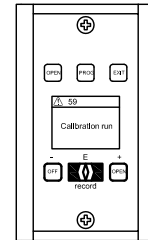
NOTE:
- If pair operator reset master first then slave.

NOTE : On pair units you will need to set the slave control in programing after the resting process. Press and hold multifunction button for (4) red flashes. The display will change to the programing menu. Using "+" button scroll down to "Param Slave" / press Record button then scroll down to "Control Panel" / press Record button / Mech Panel - press Record button / scroll up to 3 POS Auto and press Record button to select / press "PROG" button until the exit programming screen is displayed / press Record button to exit.

CALIBRATION:

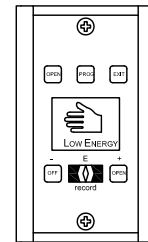
- Door MUST be calibrated before applying an activation.
- Verify the door is unlocked.
- Press and HOLD multi function button for (3) red flashes.
- Display will read ⚠ 54 "Calibration run".
- Door must complete one complete cycle with no obstructions.
- Display will show hand and "Low Energy"

NOTE:
- If pair operator calibrate master first then slave.



VERIFY CALIBRATION:

- With the door unlocked Press the multifunction button for (1) red flash.
- Door will swing to full open and return to closed position.



ACTIVATION:

- Connect wires from push button to terminals 1 and 2.

