

**FOR REFERENCE ONLY**  
This drawing is not a substitute for qualified field technicians.  
One hour of telephone support is available without charge.

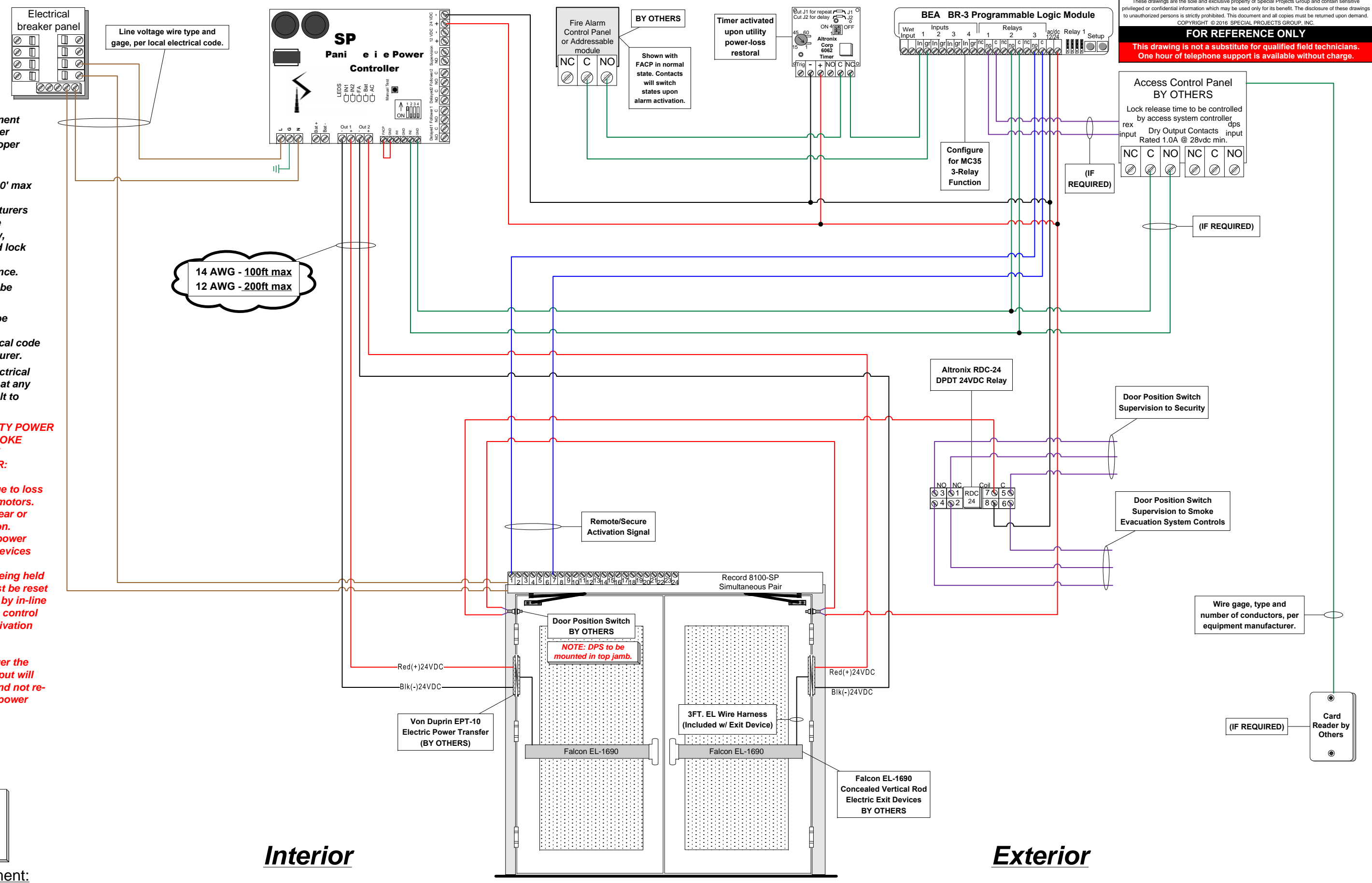
**NOTES:**

- 1) Verify that each component requiring or supplying power has been configured for proper system voltage before applying power.
  - 2) All wires to be 18 awg 100' max unless otherwise noted on drawing. Refer to manufacturers instructions for proper wire gauge on any power supply, electric device or electrified lock hardware. Manufacturers requirements take precedence.
  - 3) All line voltage power to be I/A/W local electrical code.
  - 4) All low voltage wires to be stranded copper unless superseded by local electrical code or electric device manufacturer.
  - 5) It is considered good electrical practice to run spare wires at any location that may be difficult to access after construction.
- \*\*\*6) UPON LOSS OF UTILITY POWER DURING FIRE ALARM / SMOKE EVACUATION EVENT, THE FOLLOWING MUST OCCUR:**
- \*\*\*A) Doors will re-close due to loss of power to auto-operator motors. Fans must be brought to near or completely stopped position.
  - \*\*\*B) Upon site generated power initialization, electric exit devices must be re-energized.
  - \*\*\*C) The control contact being held by the fire alarm event must be reset either programmatically or by in-line timer/relay integration with control circuit of auto-operator activation input.
- \*\*\*NOTE: Failure to re-trigger the auto-operator activation input will cause the opening to fail and not re-open when site generated power stabilized.**

Electrical Circuit Legend	
Red	(+)VDC Power
Black	(-) VDC Power
Green	Signaling
Blue	Activation
Violet	Monitoring/Supervisory
Brown	AC High Voltage

**Function Statement:**

- From exterior - locked condition:** Exit only smoke-evacuation system door.
- From exterior - unlocked condition:** Door to remain locked unless held unlocked by access system (if required) or door held unlocked and in open position by active smoke evacuation system event.
- From interior - locked condition:** Free egress at all times by means of exit device.
- From interior - unlocked condition:** Free egress at all times by means of exit device.
- General:** NOTE: Upon active fire alarm event, electric exit device latchbolts to retract and auto operator to activate both door leaves to 90 degree open position. Manual reset required after fire alarm event.



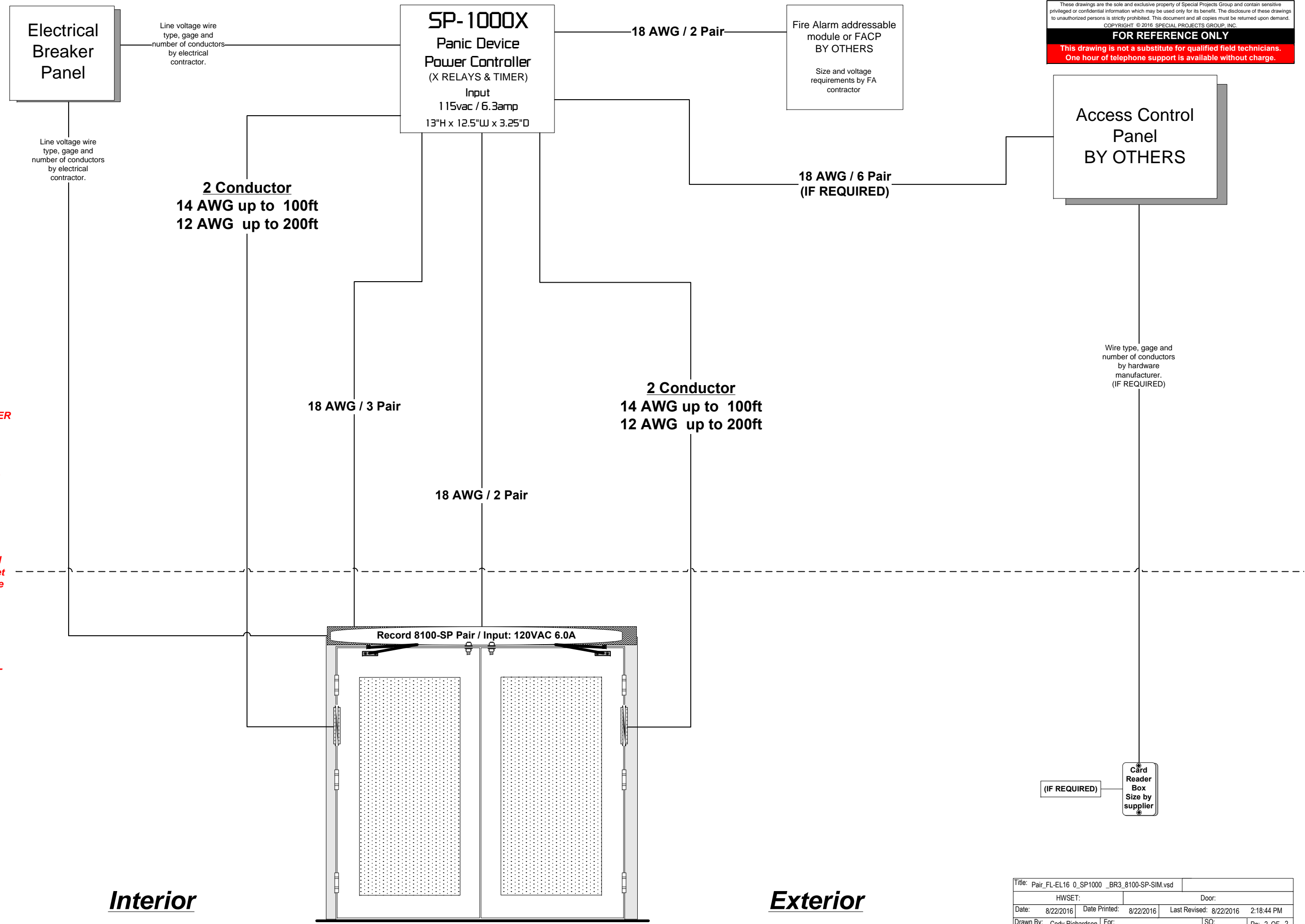
**Interior**

**Exterior**

Title: Pair_FL-EL16_0_SP1000_BR3_8100-SP-SIM.vsd		Door:	
HWSET:		Date:	
Date: 8/22/2016	Date Printed: 8/22/2016	Last Revised: 8/22/2016	2:18:44 PM
Drawn By: Cody Richardson	For:	SO:	Pg: 1 OF 2

**NOTES:**

- 1) Verify that each component requiring or supplying power has been configured for proper system voltage before applying power.
- 2) All wires to be 18 awg 100' max unless otherwise noted on drawing. Refer to manufacturers instructions for proper wire gauge on any power supply, electric device or electrified lock hardware. Manufacturers requirements take precedence.
- 3) All line voltage power to be I/A/W local electrical code.
- 4) All low voltage wires to be stranded copper unless superseded by local electrical code or electric device manufacturer.
- 5) It is considered good electrical practice to run spare wires at any location that may be difficult to access after construction.
- \*\*\*6) UPON LOSS OF UTILITY POWER DURING FIRE ALARM / SMOKE EVACUATION EVENT, THE FOLLOWING MUST OCCUR:
  - \*\*\*A) Doors will re-close due to loss of power to auto-operator motors. Fans must be brought to near or completely stopped position.
  - \*\*\*B) Upon site generated power initialization, electric exit devices must be re-energized.
  - \*\*\*C) The control contact being held by the fire alarm event must be reset either programmatically or by in-line timer/relay integration with control circuit of auto-operator activation input.
- \*\*\*NOTE: Failure to re-trigger the auto-operator activation input will cause the opening to fail and not re-open when site generated power stabilized.



These drawings are the sole and exclusive property of Special Projects Group and contain sensitive privileged or confidential information which may be used only for its benefit. The disclosure of these drawings to unauthorized persons is strictly prohibited. This document and all copies must be returned upon demand.  
COPYRIGHT © 2016 SPECIAL PROJECTS GROUP, INC.  
**FOR REFERENCE ONLY**  
This drawing is not a substitute for qualified field technicians. One hour of telephone support is available without charge.

**Interior**

**Exterior**

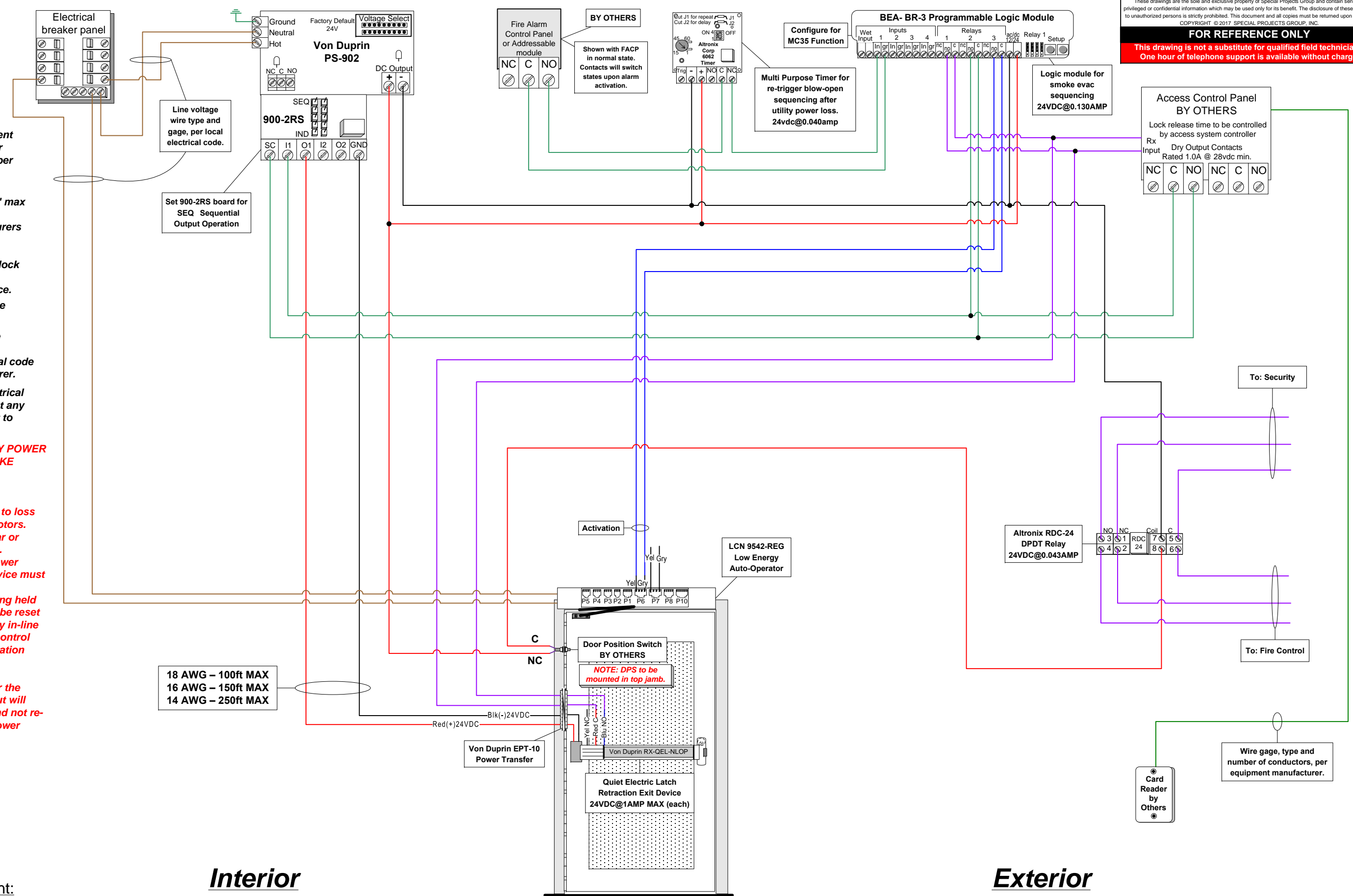
Title: Pair_FL-EL16_0_SP1000_BR3_8100-SP-SIM.vsd		Door:	
HWSET:			
Date: 8/22/2016	Date Printed: 8/22/2016	Last Revised: 8/22/2016	2:18:44 PM
Drawn By: Cody Richardson	For:	SO:	Pg: 2 OF 2

**NOTES:**

- 1) Verify that each component requiring or supplying power has been configured for proper system voltage before applying power.
  - 2) All wires to be 18 awg 100' max unless otherwise noted on drawing. Refer to manufacturers instructions for proper wire gauge on any power supply, electric device or electrified lock hardware. Manufacturers requirements take precedence.
  - 3) All line voltage power to be I/A/W local electrical code.
  - 4) All low voltage wires to be stranded copper unless superseded by local electrical code or electric device manufacturer.
  - 5) It is considered good electrical practice to run spare wires at any location that may be difficult to access after construction.
- \*\*\*6) UPON LOSS OF UTILITY POWER DURING FIRE ALARM / SMOKE EVACUATION EVENT, THE FOLLOWING MUST OCCUR:**
- \*\*\*A) Doors will re-close due to loss of power to auto-operator motors. Fans must be brought to near or completely stopped position.
  - \*\*\*B) Upon site generated power initialization, electric exit device must be re-energized.
  - \*\*\*C) The control contact being held by the fire alarm event must be reset either programmatically or by in-line timer/relay integration with control circuit of auto-operator activation input.
- \*\*\*NOTE: Failure to re-trigger the auto-operator activation input will cause the openings to fail and not re-open when site generated power stabilized.**

**Electrical Circuit Legend**

Red = (+)VDC Power
Black = (-) VDC Power
Green = Signalling
Blue = Activation
Violet = Monitoring/Supervisory
Brown = AC High Voltage



18 AWG – 100ft MAX  
16 AWG – 150ft MAX  
14 AWG – 250ft MAX

**Interior**

**Exterior**

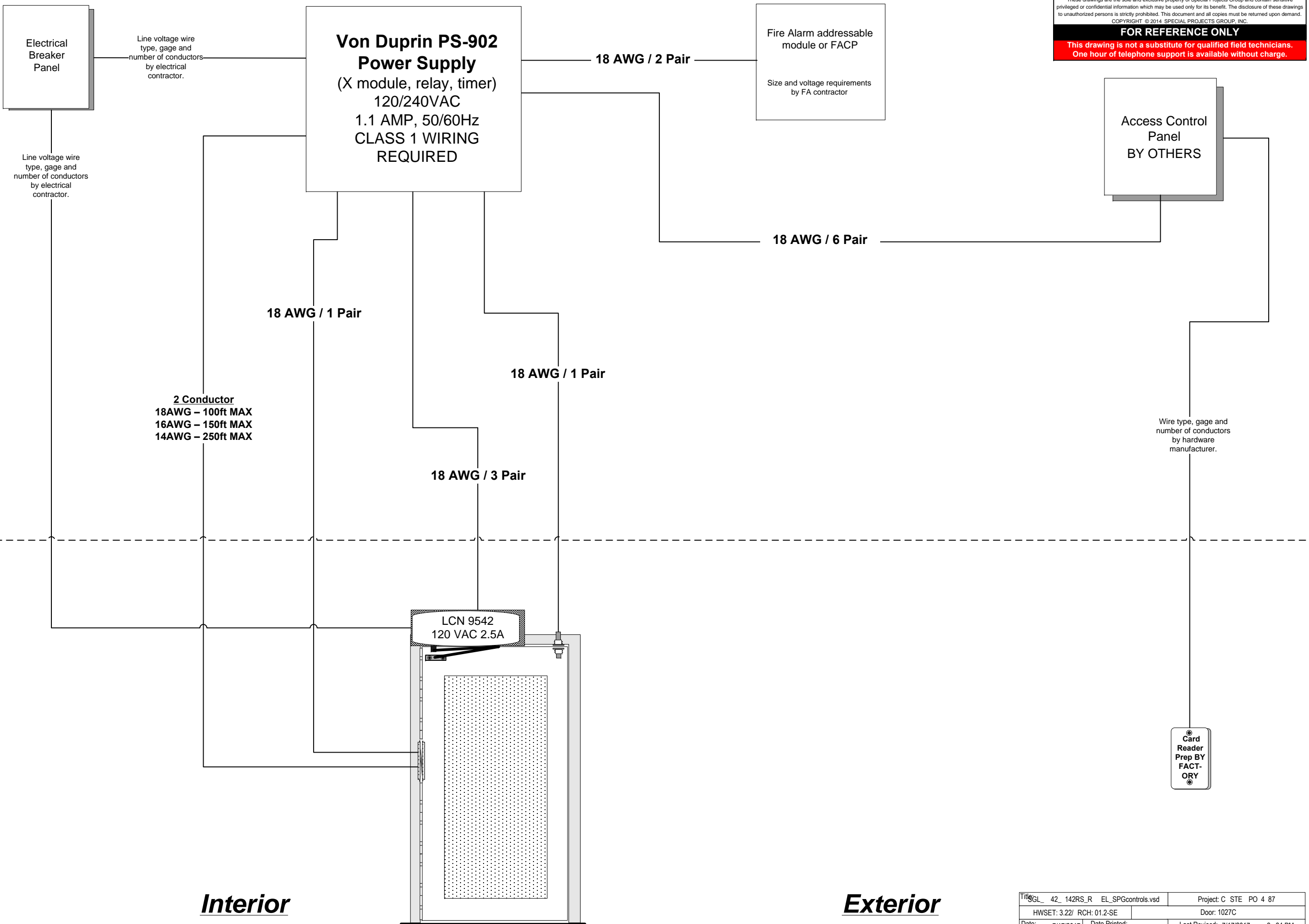
**Function Statement:**

- From exterior- locked condition:** Access by presenting valid credential at reader interface to retract electric exit device latchbolt. Manual entry by key.
- From exterior - unlocked condition:** Door to remain locked unless electric exit device latchbolt held retracted by access system or smoke evacuation system active.
- From interior - locked condition:** Free egress at all times by means of exit device. Upon egress, depression of exit device touchpad reports authorized request to exit signal to access control system for forced door alarm event (DPS) shunting.
- From interior - unlocked condition:** Free egress at all times by means of exit device. Upon egress, depression of exit device touchpad reports authorized request to exit signal to access control system for forced door alarm event (DPS) shunting.
- General:** Blow open smoke evacuation door. Upon fire alarm activation door will unlock, swing open, and remain open until manual fire alarm reset. In event of power failure, blow open sequence will automatically re-trigger when back-up power generator initiates if FACP alarm still active.

Title: W Marriott ashtville set-3.22	Project: C STE PO 4 87
HWSET: 3.22/ RCH: 01.2-SE	Door: 1027C
Date: 7/17/2017	Date Printed: Last Revised: 7/17/2017 :2 :24 PM
Drawn By: Cody Richardson	For: C stom Entrance Sol tions SO: 130132 Pg: 1 OF 2

**NOTES:**

- 1) Verify that each component requiring or supplying power has been configured for proper system voltage before applying power.
- 2) All wires to be 18 awg 100' max unless otherwise noted on drawing. Refer to manufacturers instructions for proper wire gauge on any power supply, electric device or electrified lock hardware. Manufacturers requirements take precedence.
- 3) All line voltage power to be I/A/W local electrical code.
- 4) All low voltage wires to be stranded copper unless superseded by local electrical code or electric device manufacturer.
- 5) It is considered good electrical practice to run spare wires at any location that may be difficult to access after construction.
- \*\*\*6) UPON LOSS OF UTILITY POWER DURING FIRE ALARM / SMOKE EVACUATION EVENT, THE FOLLOWING MUST OCCUR:
  - \*\*\*A) Doors will re-close due to loss of power to auto-operator motors. Fans must be brought to near or completely stopped position.
  - \*\*\*B) Upon site generated power initialization, electric exit device must be re-energized.
  - \*\*\*C) The control contact being held by the fire alarm event must be reset either programmatically or by in-line timer/relay integration with control circuit of auto-operator activation input.
- \*\*\*NOTE: Failure to re-trigger the auto-operator activation input will cause the openings to fail and not re-open when site generated power stabilized.



These drawings are the sole and exclusive property of Special Projects Group and contain sensitive privileged or confidential information which may be used only for its benefit. The disclosure of these drawings to unauthorized persons is strictly prohibited. This document and all copies must be returned upon demand.  
COPYRIGHT © 2014 SPECIAL PROJECTS GROUP, INC.  
**FOR REFERENCE ONLY**  
This drawing is not a substitute for qualified field technicians. One hour of telephone support is available without charge.

**Interior**

**Exterior**

Title: SGL_42_142RS_R_EL_SPGcontrols.vsd		Project: C STE PO 4 87	
HWSET: 3.22/ RCH: 01.2-SE		Door: 1027C	
Date: 7/17/2017	Date Printed:	Last Revised: 7/17/2017	:2 :24 PM
Drawn By: Cody Richardson	For: stom Entrance Sol tions	SO: 130132	Pg: 2 OF 2



Special Projects Group  
(888) 284-4774

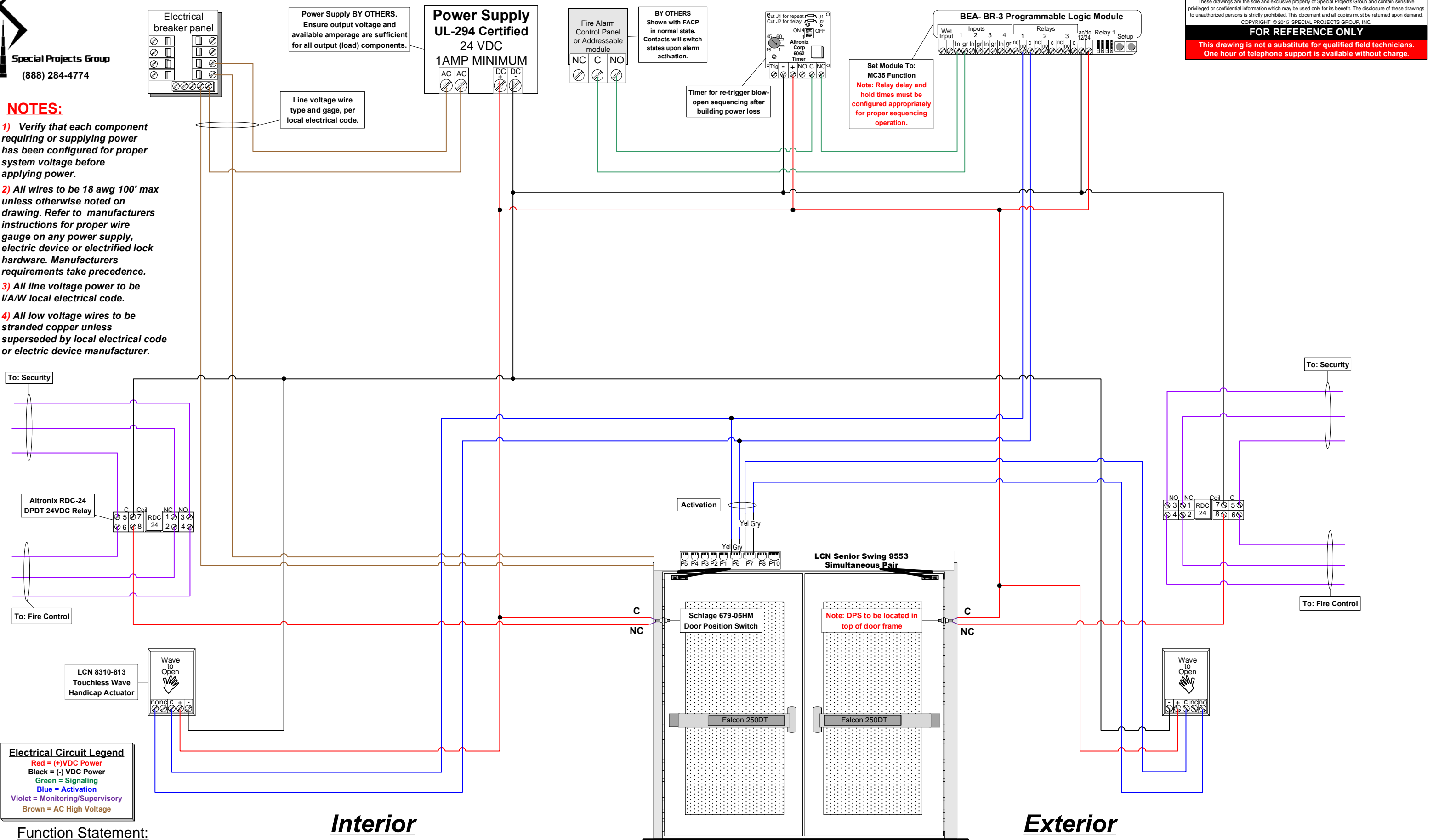
**NOTES:**

- 1) Verify that each component requiring or supplying power has been configured for proper system voltage before applying power.
- 2) All wires to be 18 awg 100' max unless otherwise noted on drawing. Refer to manufacturers instructions for proper wire gauge on any power supply, electric device or electrified lock hardware. Manufacturers requirements take precedence.
- 3) All line voltage power to be I/A/W local electrical code.
- 4) All low voltage wires to be stranded copper unless superseded by local electrical code or electric device manufacturer.

These drawings are the sole and exclusive property of Special Projects Group and contain sensitive privileged or confidential information which may be used only for its benefit. The disclosure of these drawings to unauthorized persons is strictly prohibited. This document and all copies must be returned upon demand.  
COPYRIGHT © 2015, SPECIAL PROJECTS GROUP, INC.

**FOR REFERENCE ONLY**

This drawing is not a substitute for qualified field technicians. One hour of telephone support is available without charge.



**Electrical Circuit Legend**  
 Red = (+)VDC Power  
 Black = (-) VDC Power  
 Green = Signaling  
 Blue = Activation  
 Violet = Monitoring/Supervisory  
 Brown = AC High Voltage

**Function Statement:**

- From exterior- locked condition:** Push/Pull operation with no locking hardware. Handicap actuators always available for use.
- From exterior - unlocked condition:** Same as above.
- From interior - locked condition:** Same as above.
- From interior - unlocked condition:** Same as above.
- General:** Upon fire alarm activation, auto-operator to open doors. Doors to remain in open position until manual FACP alarm reset. In event of power-loss during active FACP alarm, smoke evacuation system to automatically resequence.

*Interior*

*Exterior*

Title:		Project:			
Heading:		Door:			
Date: 1/6/2016	Date Printed: 1/ /2016	Last Revised: 1/ /2016	10:2 :11 M		
Drawn By: Cody Richardson	For:	SO:	Pg: 1 OF 2		

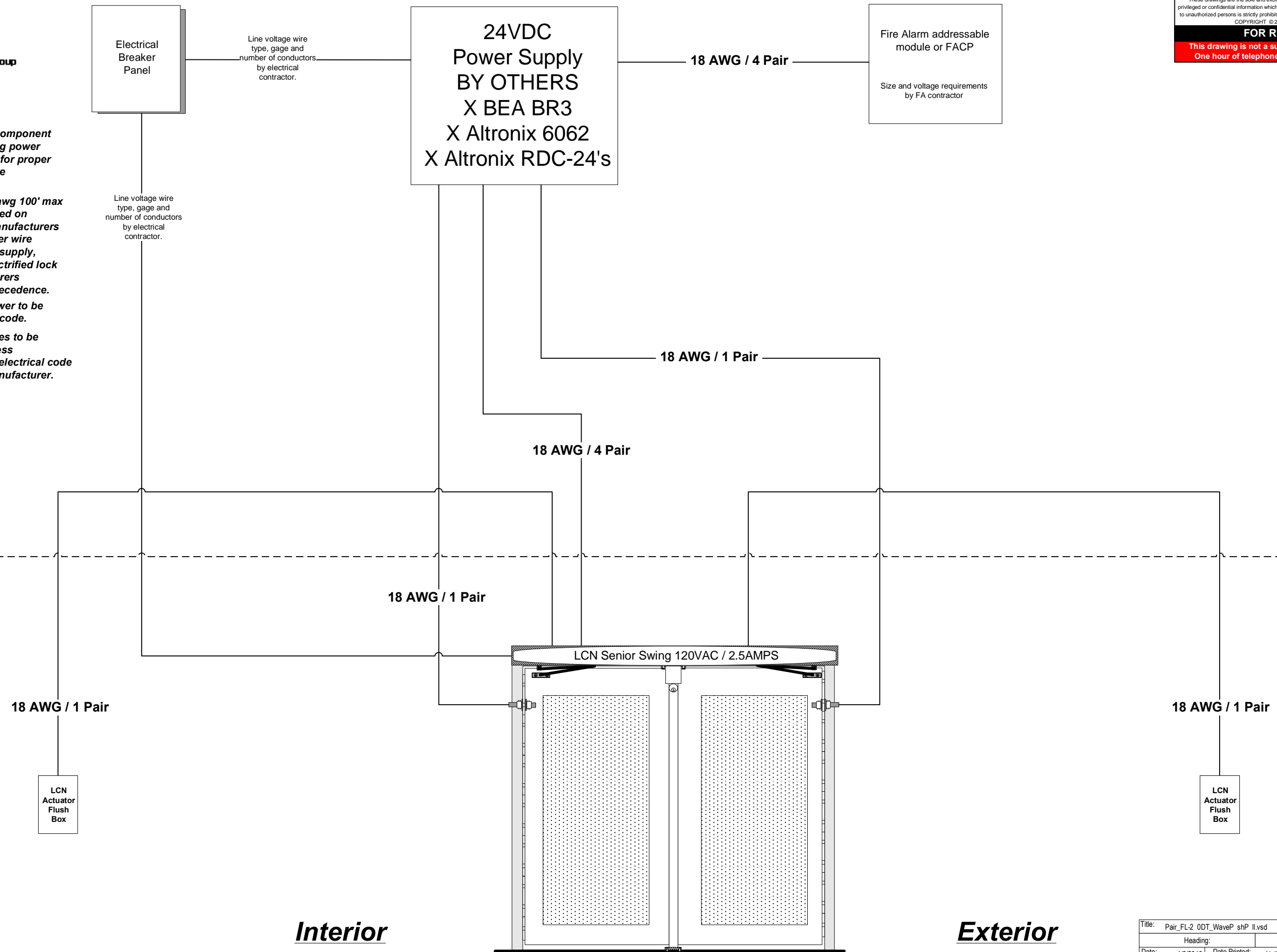
**NOTES:**

- 1) Verify that each component requiring or supplying power has been configured for proper system voltage before applying power.
- 2) All wires to be 18 awg 100' max unless otherwise noted on drawing. Refer to manufacturers instructions for proper wire gauge on any power supply, electric device or electrified lock hardware. Manufacturers requirements take precedence.
- 3) All line voltage power to be I/A/W local electrical code.
- 4) All low voltage wires to be stranded copper unless superseded by local electrical code or electric device manufacturer.

These drawings are the sole and exclusive property of Special Projects Group and contain sensitive privileged or confidential information which may be used only for its benefit. The disclosure of these drawings to unauthorized persons is strictly prohibited. This document and all copies must be returned upon demand.  
COPYRIGHT © 2015 SPECIAL PROJECTS GROUP, INC.

**FOR REFERENCE ONLY**

This drawing is not a substitute for qualified field technicians.  
One hour of telephone support is available without charge.



Title: Pair_FL-2 ODT_WaveP shP II.vsd		Project:	
Heading:		Door:	
Date: 1/6/2016	Date Printed: 1/ /2016	Last Revised: 1/6/2016	10:2 :11 M
Drawn By: Cody Richardson	For:	SO:	Pg. 2 OF 2



Special Projects Group  
(888) 284-4774

**NOTES:**

- 1) Verify that each component requiring or supplying power has been configured for proper system voltage before applying power.
- 2) All wires to be 18 awg 100' max unless otherwise noted on drawing. Refer to manufacturers instructions for proper wire gauge on any power supply, electric device or electrified lock hardware. Manufacturers requirements take precedence.
- 3) All line voltage power to be I/A/W local electrical code.
- 4) All low voltage wires to be stranded copper unless superseded by local electrical code or electric device manufacturer.
- 5) It is considered good electrical practice to run spare wires at any location that may be difficult to access after construction.

**\*\*\*6) UPON LOSS OF UTILITY POWER DURING FIRE ALARM / SMOKE EVACUATION EVENT, THE FOLLOWING MUST OCCUR:**

**\*\*\*A) Doors will re-close due to loss of power to auto-operator motors. Fans must be brought to near or completely stopped position.**

**\*\*\*B) Upon site generated power initialization, mag-lock device must not be re-energized.**

**\*\*\*C) The control contact being held by the fire alarm event must be reset either programmatically or by in-line timer/relay integration with control circuit of auto-operator activation input.**

**\*\*\*NOTE: Failure to re-trigger the auto-operator activation input will cause the openings to fail and not re-open when site generated power stabilized.**

**Electrical Circuit Legend**

- Red = (+)VDC Power
- Black = (-) VDC Power
- Green = Signaling
- Blue = Activation
- Violet = Monitoring/Supervisory
- Brown = AC High Voltage

**Function Statement:**

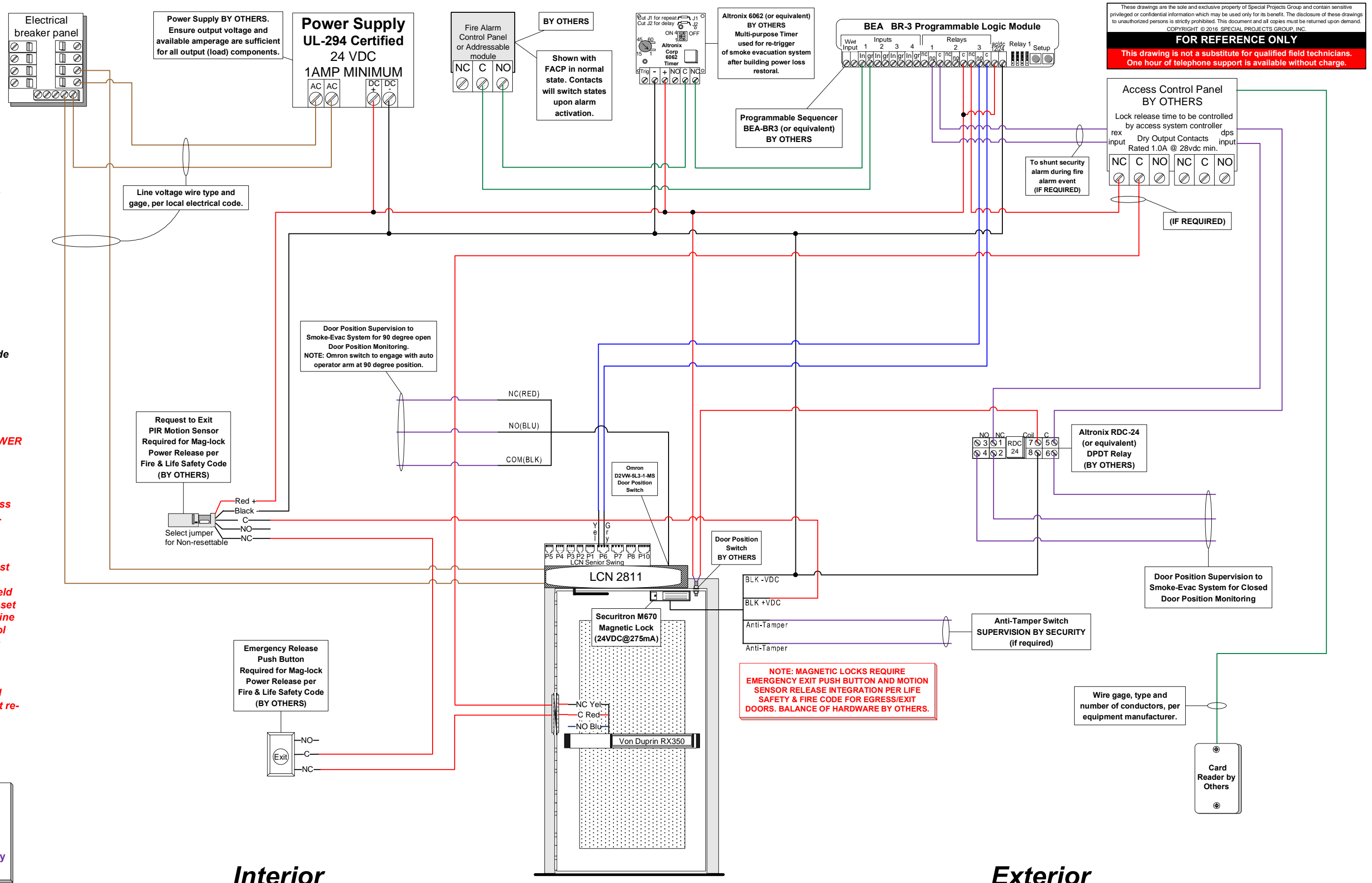
**From exterior- locked condition:** Access by presenting valid credential to release mag-lock and permit ingress.

**From exterior - unlocked condition:** Door to remain secured by mag-lock unless power released by access system, motion sensor, push button, or fire alarm / smoke evacuation system controls.

**From interior - locked condition:** Free egress at all times by means of request to exit push bar, motion sensor, or emergency exit push button to release power to mag-lock.

**From interior - unlocked condition:** Free egress at all times by means of request to exit push bar, motion sensor, or emergency exit push button to release power to mag-lock.

**General:** Upon fire alarm activation, mag-lock power to be released and auto-operator to swing open to 90 degrees position. Door to remain in full-open 90 degrees position until manual FACP reset. Smoke Evac system controls BY OTHERS.



**Interior**

**Exterior**

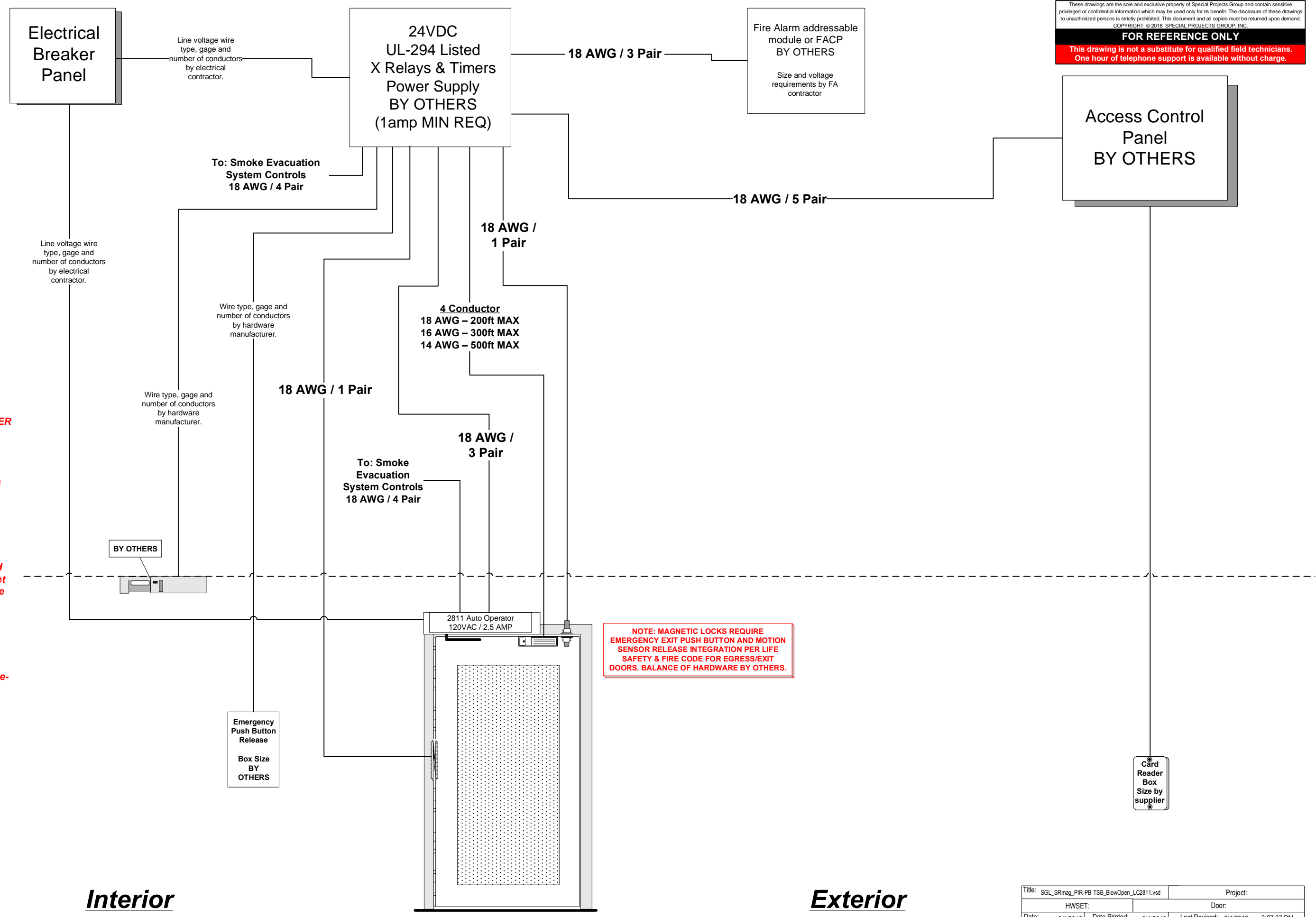
These drawings are the sole and exclusive property of Special Projects Group and contain sensitive privileged or confidential information which may be used only for its benefit. The disclosure of these drawings to unauthorized persons is strictly prohibited. This document and all copies must be returned upon demand.  
COPYRIGHT © 2016 SPECIAL PROJECTS GROUP, INC.  
**FOR REFERENCE ONLY**

**This drawing is not a substitute for qualified field technicians. One hour of telephone support is available without charge.**

Title: SGL_SRmag_PIR-PB-TSB_BlowOpen_LC2811.vsd	Project:
HWSET:	Door:
Date: 3/1/2016	Date Printed: 3/1/2016
Drawn By: Cody Richardson	Last Revised: 3/1/2016 3:27:37 PM
For:	SO:
	Pg: 1 OF 2

**NOTES:**

- 1) Verify that each component requiring or supplying power has been configured for proper system voltage before applying power.
  - 2) All wires to be 18 awg 100' max unless otherwise noted on drawing. Refer to manufacturers instructions for proper wire gauge on any power supply, electric device or electrified lock hardware. Manufacturers requirements take precedence.
  - 3) All line voltage power to be I/A/W local electrical code.
  - 4) All low voltage wires to be stranded copper unless superseded by local electrical code or electric device manufacturer.
  - 5) It is considered good electrical practice to run spare wires at any location that may be difficult to access after construction.
- \*\*\*6) UPON LOSS OF UTILITY POWER DURING FIRE ALARM / SMOKE EVACUATION EVENT, THE FOLLOWING MUST OCCUR:
- \*\*\*A) Doors will re-close due to loss of power to auto-operator motors. Fans must be brought to near or completely stopped position.
  - \*\*\*B) Upon site generated power initialization, mag-lock device must not be re-energized.
  - \*\*\*C) The control contact being held by the fire alarm event must be reset either programmatically or by in-line timer/relay integration with control circuit of auto-operator activation input.
- \*\*\*NOTE: Failure to re-trigger the auto-operator activation input will cause the openings to fail and not re-open when site generated power stabilized.



These drawings are the sole and exclusive property of Special Projects Group and contain sensitive privileged or confidential information which may be used only for its benefit. The disclosure of these drawings to unauthorized persons is strictly prohibited. This document and all copies must be returned upon demand.  
COPYRIGHT © 2016 SPECIAL PROJECTS GROUP, INC.  
**FOR REFERENCE ONLY**  
This drawing is not a substitute for qualified field technicians.  
One hour of telephone support is available without charge.

**Interior**

**Exterior**

Title: SGL_SRmag_PIR-PB-TSB_BlowOpen_LC2811.vsd		Project:	
HWSET:		Door:	
Date: 3/1/2016	Date Printed: 3/1/2016	Last Revised: 3/1/2016	3:27:37 PM
Drawn By: Cody Richardson	For:	SO:	Pg. 2 OF 2



**NOTES:**

- 1) Verify that each component requiring or supplying power has been configured for proper system voltage before applying power.
- 2) All wires to be 18 awg 100' max unless otherwise noted on drawing. Refer to manufacturers instructions for proper wire gauge on any power supply, electric device or electrified lock hardware. Manufacturers requirements take precedence.
- 3) All line voltage power to be I/A/W local electrical code.
- 4) All low voltage wires to be stranded copper unless superseded by local electrical code or electric device manufacturer.
- 5) It is considered good electrical practice to run spare wires in any location that may be difficult to access after construction.

**\*\*\*6) UPON LOSS OF UTILITY POWER DURING FIRE ALARM / SMOKE EVACUATION EVENT, THE FOLLOWING MUST OCCUR:**

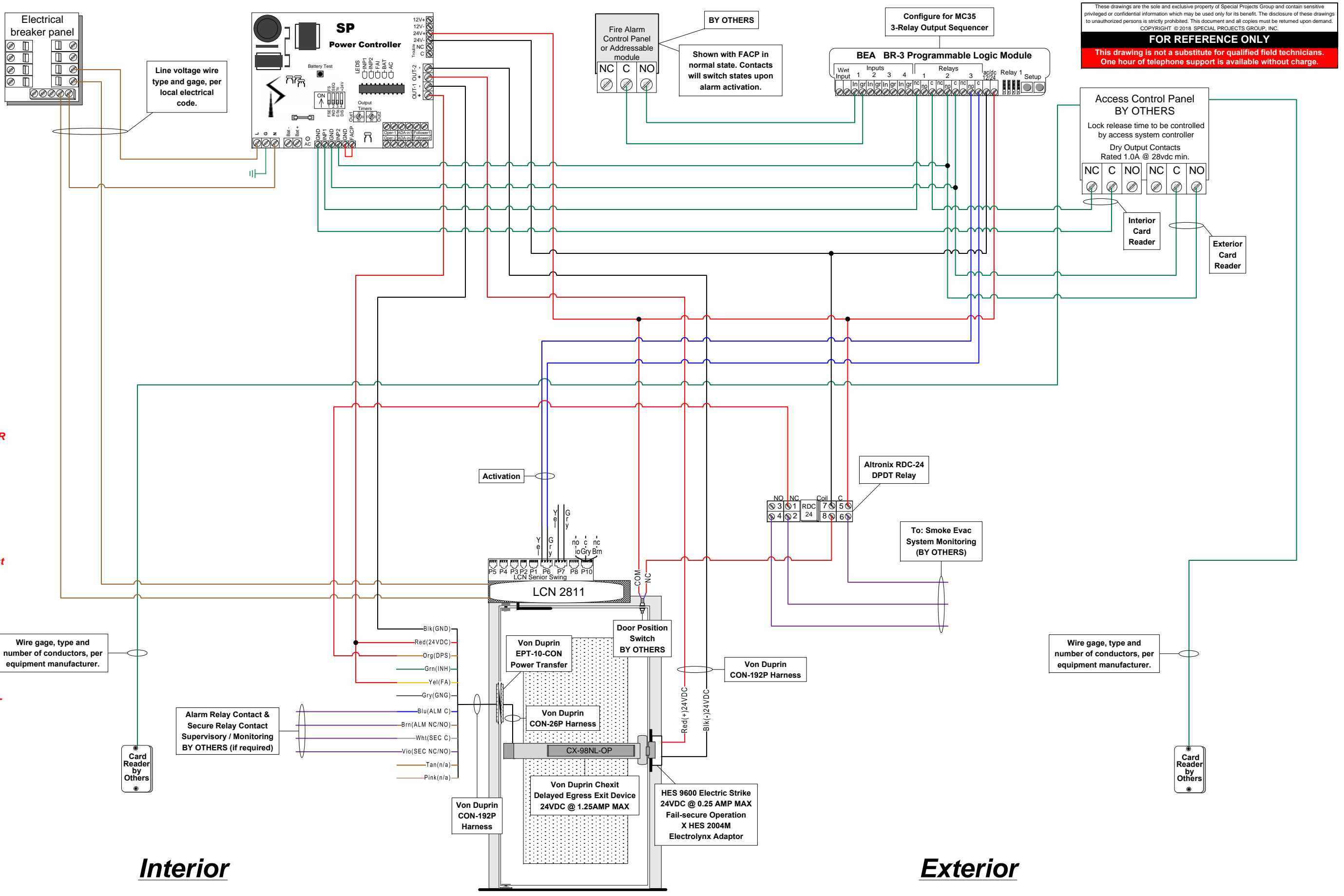
- \*\*\*A) Doors will re-close due to loss of power to auto-operator motors. Fans must be brought to near or completely stopped position.
- \*\*\*B) Upon site generated power initialization, electric exit device must be re-energized.
- \*\*\*C) The control contact being held by the fire alarm event must be reset either programmatically or by in-line timer/relay integration with control circuit of auto-operator activation input.

**\*\*\*NOTE: Failure to re-trigger the auto-operator activation input will cause the openings to fail and not re-open when site generated power stabilized.**

Electrical Circuit Legend	
Red	(+)VDC Power
Black	(-) VDC Power
Green	Signaling
Blue	Activation
Violet	Monitoring/Supervisory
Brown	AC High Voltage

**Function Statement:**

**From exterior - locked condition:** Access by presenting valid credential at reader interface to release/unlock electric strike gate and permit ingress. Note: Key access by cylinder will only be available when Chexit device not armed.  
**From exterior - unlocked condition:** Door to remain locked and delayed egress Chexit device armed unless deactivated by access system or keyswitch control. Electric strike power controlled by access system.  
**From interior - locked condition:** Delayed egress by pressing exit device push pad to invoke irreversible 15 second alarmed delay. After delay, egress permitted. Alarm reset by access system signal or keyswitch control on exit device.  
**From interior - unlocked condition:** Door to remain locked and delayed egress Chexit device armed unless deactivated by access system or keyswitch control. When unlocked, free egress by means of exit device push pad.  
**General:** Upon fire alarm activation delayed egress Chexit device to deactivate, electric strike to unlock (gate release) and auto operator to swing door to 90 degree position. Door to remain open until manual FACP reset.



These drawings are the sole and exclusive property of Special Projects Group and contain sensitive privileged or confidential information which may be used only for its benefit. The disclosure of these drawings to unauthorized persons is strictly prohibited. This document and all copies must be returned upon demand.  
 COPYRIGHT © 2018 SPECIAL PROJECTS GROUP, INC.  
**FOR REFERENCE ONLY**  
 This drawing is not a substitute for qualified field technicians.  
 One hour of telephone support is available without charge.

Title: 2811_Smo eEvac_C 8_SP2000_BR3.vsd		Door: 600D- C	
HWSET: 12.0_ RCH: 2 8.7			
Date: 8/1/2018	Date Printed:	Last Revised: 8/1/2018	12:13:36 PM
Drawn By: Cody Richardson	For:	SO:	Pg: 1 OF 2

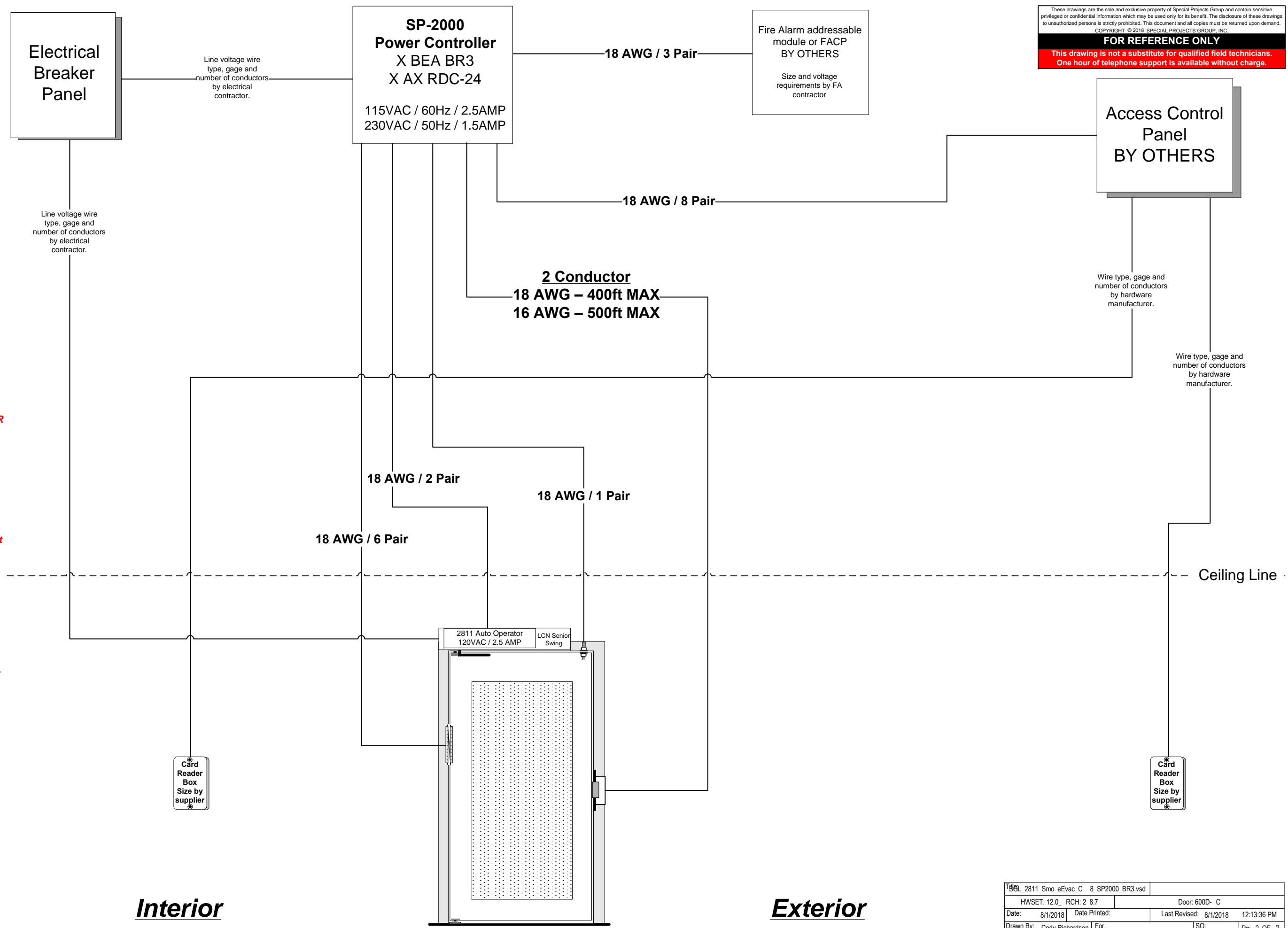
**NOTES:**

- 1) Verify that each component requiring or supplying power has been configured for proper system voltage before applying power.
- 2) All wires to be 18 awg 100' max unless otherwise noted on drawing. Refer to manufacturers instructions for proper wire gauge on any power supply, electric device or electrified lock hardware. Manufacturers requirements take precedence.
- 3) All line voltage power to be I/A/W local electrical code.
- 4) All low voltage wires to be stranded copper unless superseded by local electrical code or electric device manufacturer.
- 5) It is considered good electrical practice to run spare wires at any location that may be difficult to access after construction.
- \*\*\*6) UPON LOSS OF UTILITY POWER DURING FIRE ALARM / SMOKE EVACUATION EVENT, THE FOLLOWING MUST OCCUR:
- \*\*\*A) Doors will re-close due to loss of power to auto-operator motors. Fans must be brought to near or completely stopped position.
- \*\*\*B) Upon site generated power initialization, electric exit device must be re-energized.
- \*\*\*C) The control contact being held by the fire alarm event must be reset either programmatically or by in-line timer/relay integration with control circuit of auto-operator activation input.
- \*\*\*NOTE: Failure to re-trigger the auto-operator activation input will cause the openings to fail and not re-open when site generated power stabilized.

These drawings are the sole and exclusive property of Special Projects Group and contain sensitive privileged or confidential information which may be used only for its benefit. The disclosure of these drawings to unauthorized persons is strictly prohibited. This document and all copies must be returned upon demand.  
COPYRIGHT © 2018 SPECIAL PROJECTS GROUP, INC.

**FOR REFERENCE ONLY**

**This drawing is not a substitute for qualified field technicians. One hour of telephone support is available without charge.**



**Interior**

**Exterior**

Tel_2811_Smo eEvac_C 8_SP2000_BR3.vsd			
HWSET: 12.0_	RCH: 2 8.7	Door: 600D- C	
Date: 8/1/2018	Date Printed:	Last Revised: 8/1/2018	12:13:36 PM
Drawn By: Cody Richardson	For:	SO:	Pg: 2 OF 2