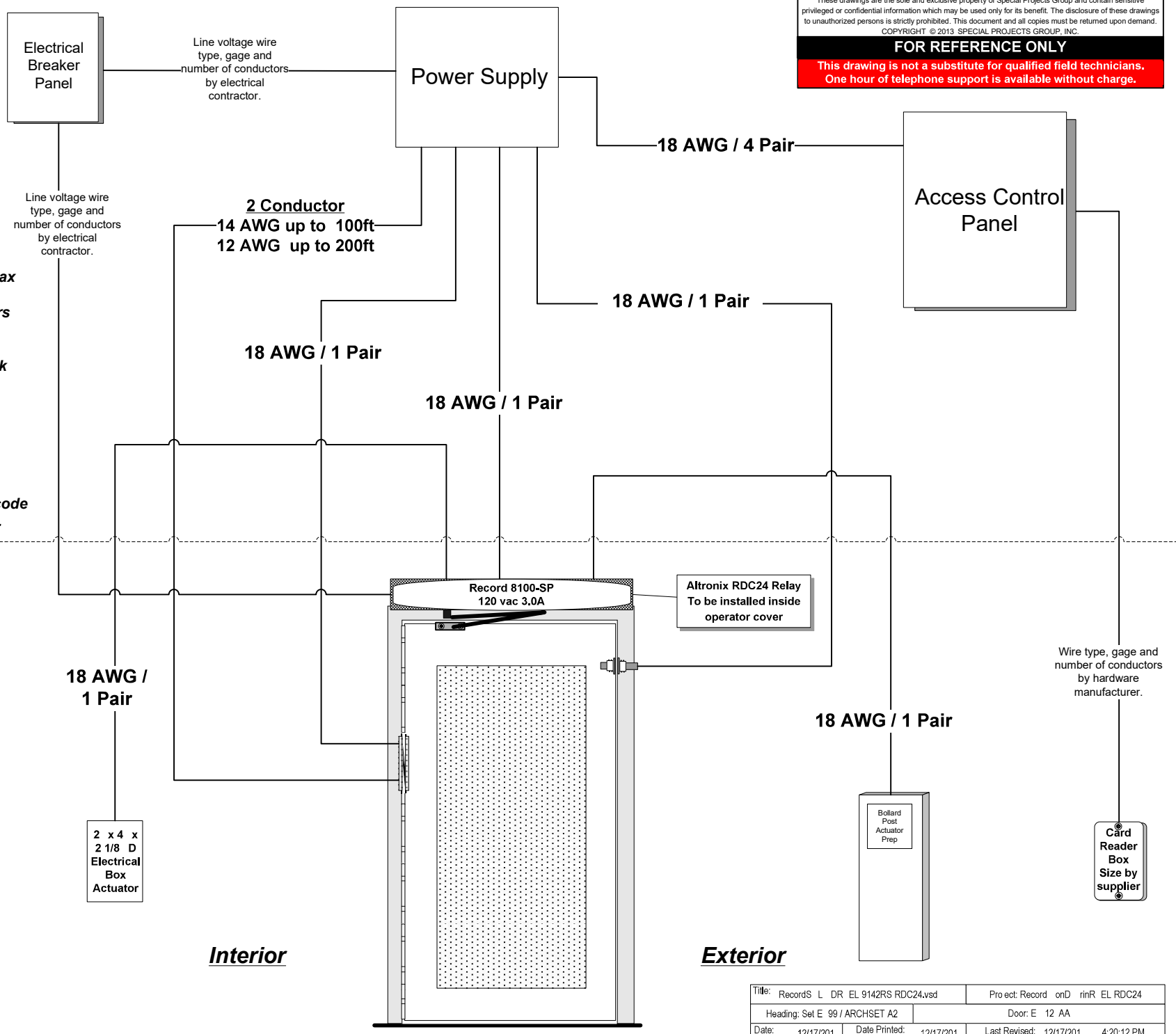


- NOTES:**
- 1) Verify that each component requiring or supplying power has been configured for proper system voltage before applying power.
 - 2) All wires to be 18 awg 100' max unless otherwise noted on drawing. Refer to manufacturers instructions for proper wire gauge on any power supply, electric device or electrified lock hardware. Manufacturers requirements take precedence.
 - 3) All line voltage power to be I/A/W local electrical code.
 - 4) All low voltage wires to be stranded copper unless superseded by local electrical code or electric device manufacturer.



Title: Records L DR EL 9142RS RDC24.vsd	Project Record onD rinR EL RDC24
Heading: Set E 99 / ARCHSET A2	Door: E 12 AA
Date: 12/17/201	Date Printed: 12/17/201
Drawn By: Cody Richardson	Last Revised: 12/17/201 4:20:12 PM
For: Special Projects Group	SO: SP SO Pg: 2 OF 2