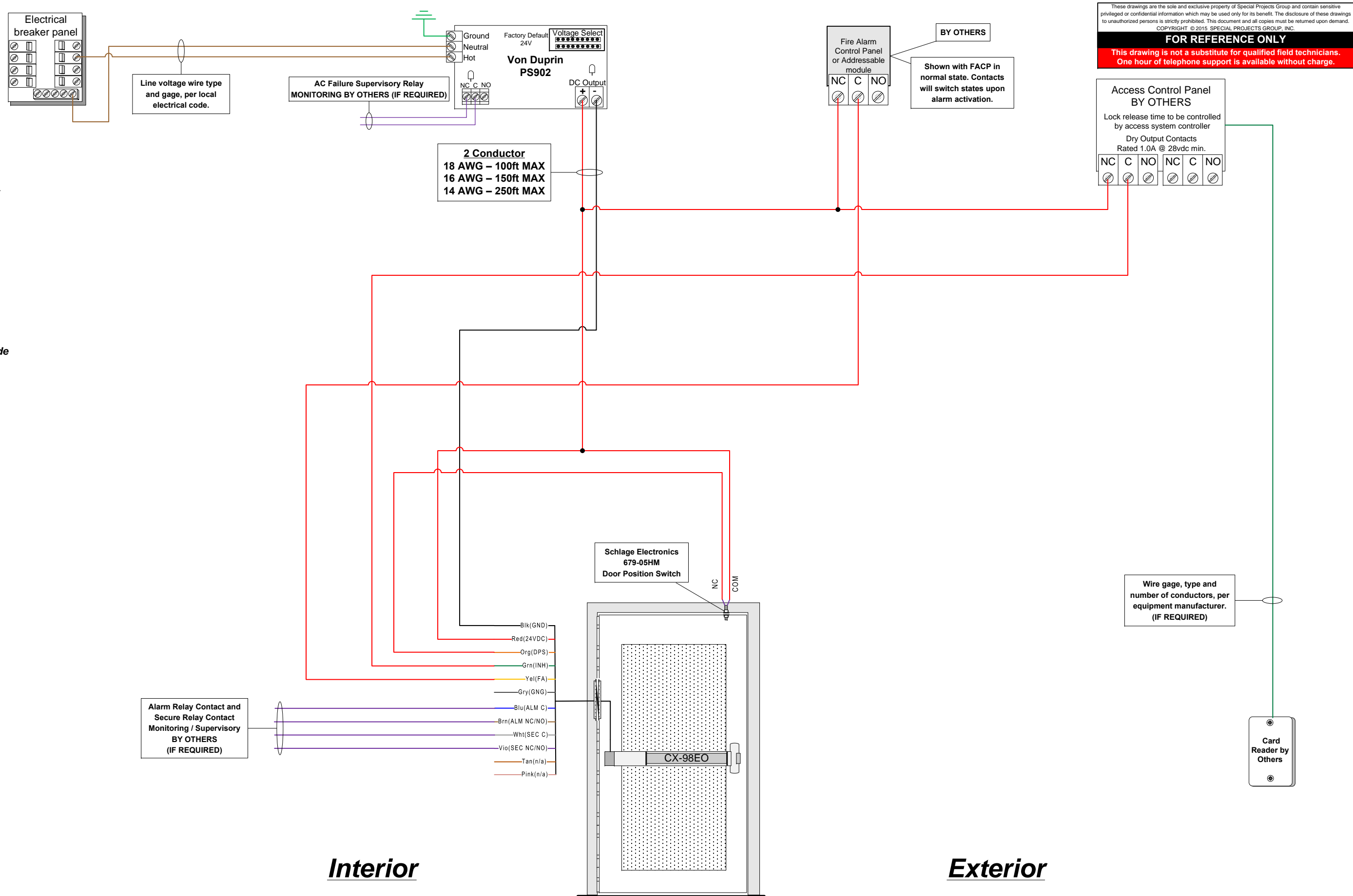




Special Projects Group
(888) 284-4774

NOTES:

- 1) Verify that each component requiring or supplying power has been configured for proper system voltage before applying power.
- 2) All wires to be 18 awg 100' max unless otherwise noted on drawing. Refer to manufacturers instructions for proper wire gauge on any power supply, electric device or electrified lock hardware. Manufacturers requirements take precedence.
- 3) All line voltage power to be I/A/W local electrical code.
- 4) All low voltage wires to be stranded copper unless superseded by local electrical code or electric device manufacturer.
- 5) It is considered good electrical practice to run spare wires at any location that may be difficult to access after construction.



These drawings are the sole and exclusive property of Special Projects Group and contain sensitive privileged or confidential information which may be used only for its benefit. The disclosure of these drawings to unauthorized persons is strictly prohibited. This document and all copies must be returned upon demand.
COPYRIGHT © 2015, SPECIAL PROJECTS GROUP, INC.

FOR REFERENCE ONLY

This drawing is not a substitute for qualified field technicians. One hour of telephone support is available without charge.

| Electrical Circuit Legend | |
|---------------------------|------------------------|
| Red | (+)VDC Power |
| Black | (-) VDC Power |
| Green | Signaling |
| Blue | Activation |
| Violet | Monitoring/Supervisory |
| Brown | AC High Voltage |

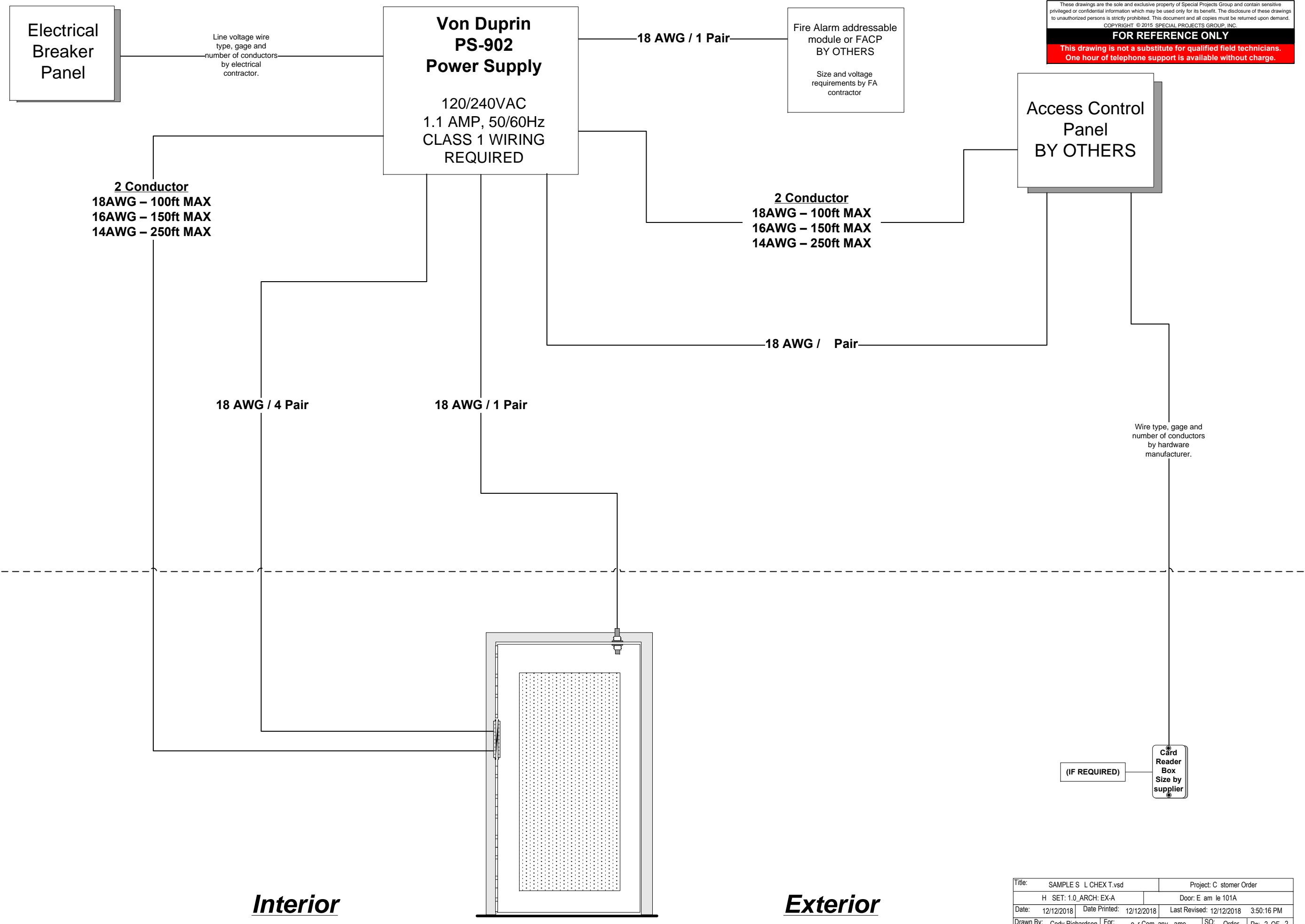
Function Statement:

- From exterior- locked condition:** Exit only delayed egress door. No exterior access.
- From exterior - unlocked condition:** Exit only delayed egress door. No exterior access.
- From interior - locked condition:** Delayed egress by pushing exit device push pad to initiate irreversible 15 second delay with local alarm. After 15 seconds, egress permitted via exit device.
- From interior - unlocked condition:** Delayed egress exit to remain armed and secure unless bypassed or inhibited by keyswitch control or access control system command. When disarmed/unlocked, free egress permitted.
- General:** Upon fire alarm activation, delayed egress exit device alarm to deactivate and free immediate egress without alarm to be permitted. Delayed egress alarm to remain deactivated until manual FACP reset.

| | |
|------------------------------|-------------------------------------|
| Title: SAMPLE S L CHEX T.vsd | Project: C stomer Order |
| H SET: 1.0_ARCH: EX-A | Door: E am le 101A |
| Date: 12/12/2018 | Date Printed: 12/12/2018 |
| Drawn By: Cody Richardson | Last Revised: 12/12/2018 3:50:16 PM |
| For: o r Com any ame | SO: Order Pg: 1 OF 2 |

NOTES:

- 1) Verify that each component requiring or supplying power has been configured for proper system voltage before applying power.
- 2) All wires to be 18 awg 100' max unless otherwise noted on drawing. Refer to manufacturers instructions for proper wire gauge on any power supply, electric device or electrified lock hardware. Manufacturers requirements take precedence.
- 3) All line voltage power to be I/A/W local electrical code.
- 4) All low voltage wires to be stranded copper unless superseded by local electrical code or electric device manufacturer.
- 5) It is considered good electrical practice to run spare wires at any location that may be difficult to access after construction.



These drawings are the sole and exclusive property of Special Projects Group and contain sensitive privileged or confidential information which may be used only for its benefit. The disclosure of these drawings to unauthorized persons is strictly prohibited. This document and all copies must be returned upon demand.
COPYRIGHT © 2015 SPECIAL PROJECTS GROUP, INC.
FOR REFERENCE ONLY
This drawing is not a substitute for qualified field technicians.
One hour of telephone support is available without charge.

| | | | |
|-----------|-----------------------|---------------|-----------------------|
| Title: | SAMPLE S L CHEX T.vsd | Project: | C stomer Order |
| H SET: | 1.0_ARCH: EX-A | Door: | E am le 101A |
| Date: | 12/12/2018 | Date Printed: | 12/12/2018 |
| | | Last Revised: | 12/12/2018 3:50:16 PM |
| Drawn By: | Cody Richardson | For: | o r Com any ame |
| | | SO: | Order |
| | | Pg: | 2 OF 2 |



Special Projects Group
(888) 284-4774

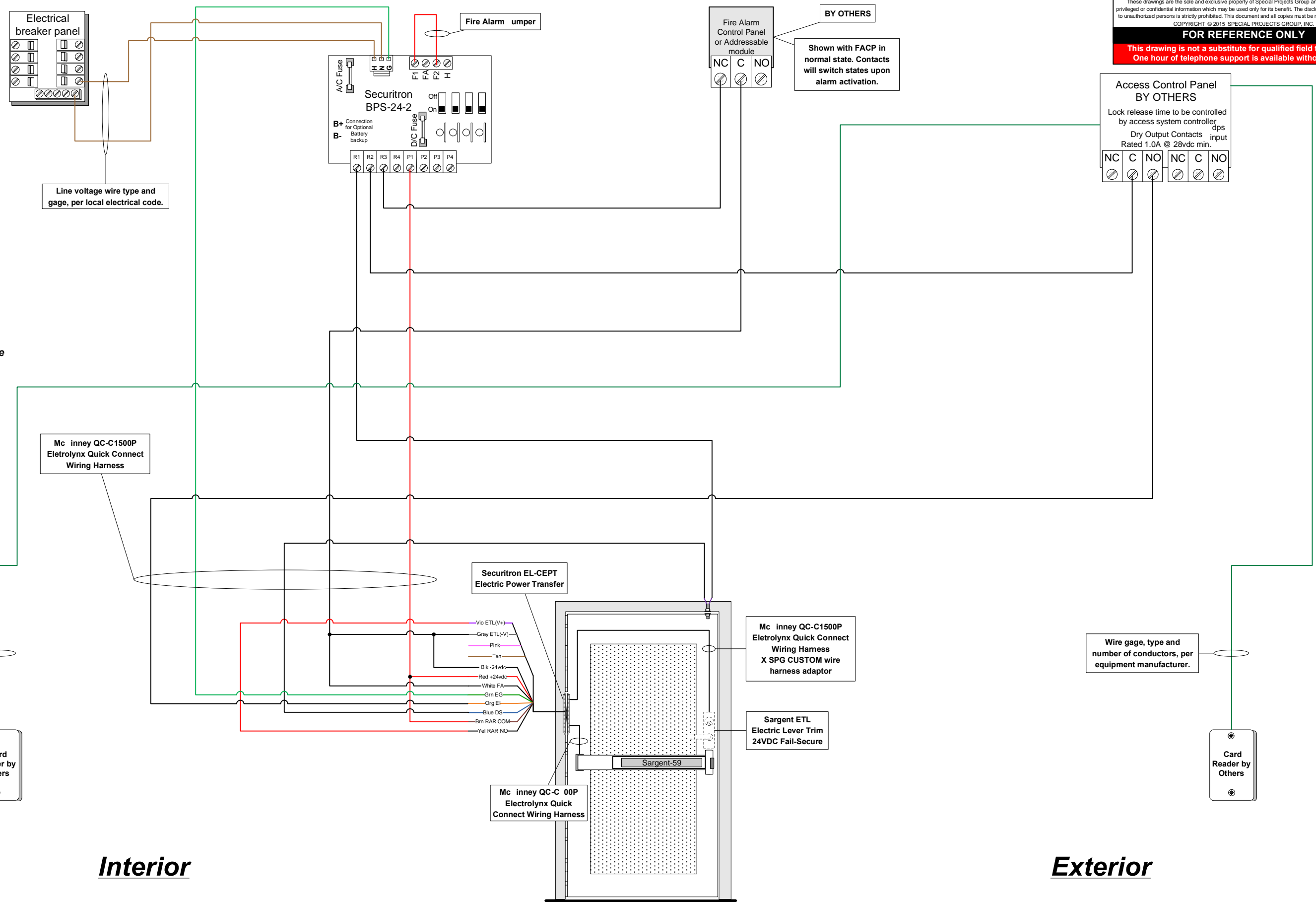
NOTES:

- 1) Verify that each component requiring or supplying power has been configured for proper system voltage before applying power.
- 2) All wires to be 18 awg 100' max unless otherwise noted on drawing. Refer to manufacturers instructions for proper wire gauge on any power supply, electric device or electrified lock hardware. Manufacturers requirements take precedence.
- 3) All line voltage power to be I/A/W local electrical code.
- 4) All low voltage wires to be stranded copper unless superseded by local electrical code or electric device manufacturer.
- 5) It is considered good electrical practice to run spare wires at any location that may be difficult to access after construction.

These drawings are the sole and exclusive property of Special Projects Group and contain sensitive privileged or confidential information which may be used only for its benefit. The disclosure of these drawings to unauthorized persons is strictly prohibited. This document and all copies must be returned upon demand.
COPYRIGHT © 2015, SPECIAL PROJECTS GROUP, INC.

FOR REFERENCE ONLY

This drawing is not a substitute for qualified field technicians. One hour of telephone support is available without charge.



Interior

Exterior

Function Statement:

- From exterior- locked condition:** Access by presenting valid credential to exterior reader to disarm delayed egress alarm and unlock electric lever trim.
- From exterior - unlocked condition:** Door to remain locked with delayed egress alarm active unless disarmed and electric lever trim unlocked by access system.
- From interior - locked condition:** Delayed egress by pressing exit device push pad to invoke irreversible 15 second alarmed delay. After 15 seconds, egress permitted while local alarm sounds. Card reader to inhibit alarm for authorized egress.
- From interior - unlocked condition:** Delayed egress by pressing exit device push pad to invoke irreversible 15 second alarmed delay. After 15 seconds, egress permitted while local alarm sounds. Card reader to inhibit alarm for authorized egress.
- General:** During event of fire alarm or utility power loss, delayed egress alarm to deactivate and immediate egress to be permitted without alarm.

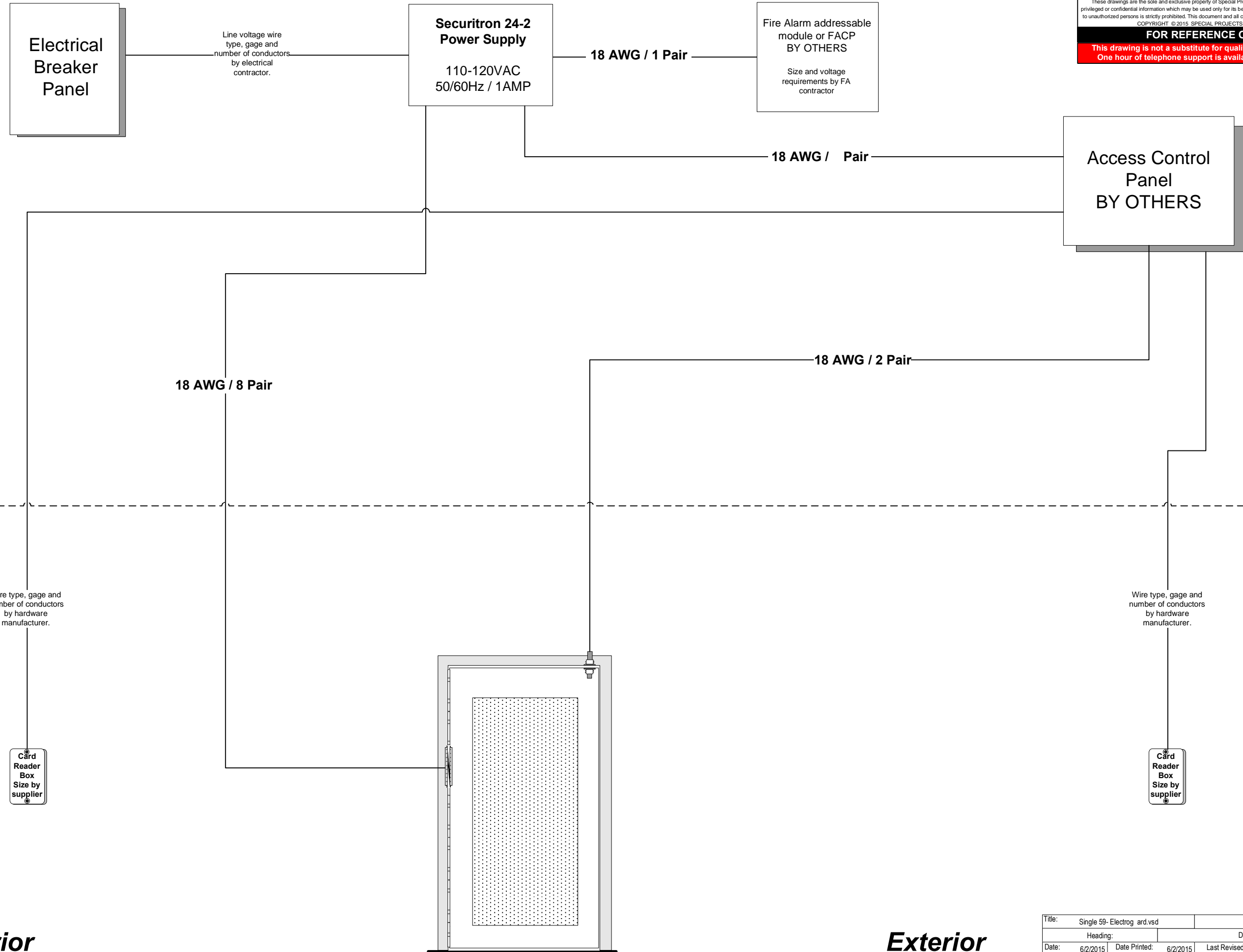
| | | | |
|-----------|------------------------------|---------------|---------------------|
| Title: | Single 59- Electrog ar.d.vsd | | |
| Heading: | Door: | | |
| Date: | 6/2/2015 | Date Printed: | 6/2/2015 |
| Drawn By: | Cody Richardson | Last Revised: | 6/2/2015 5:50:03 PM |
| For: | | SO: | Pg: 1 OF 2 |

NOTES:

- 1) Verify that each component requiring or supplying power has been configured for proper system voltage before applying power.
- 2) All wires to be 18 awg 100' max unless otherwise noted on drawing. Refer to manufacturers instructions for proper wire gauge on any power supply, electric device or electrified lock hardware. Manufacturers requirements take precedence.
- 3) All line voltage power to be I/A/W local electrical code.
- 4) All low voltage wires to be stranded copper unless superseded by local electrical code or electric device manufacturer.
- 5) It is considered good electrical practice to run spare wires at any location that may be difficult to access after construction.

FOR REFERENCE ONLY

This drawing is not a substitute for qualified field technicians. One hour of telephone support is available without charge.



Interior

Exterior

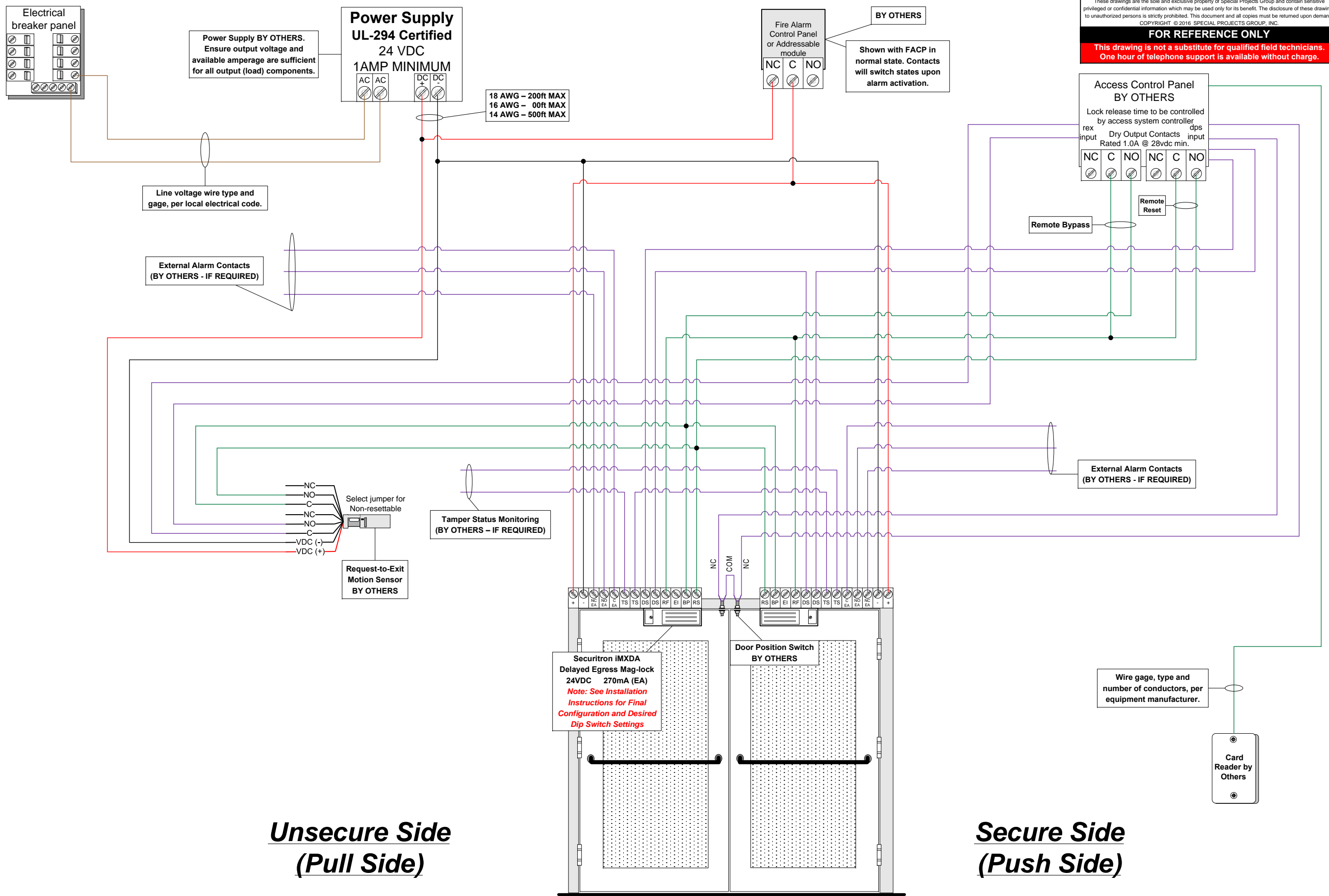
| | | | | | |
|------------------------------------|------------------------|------------------------|------------|-------|--|
| Title: Single 59- Electrog ard.vsd | | Heading: | | Door: | |
| Date: 6/2/2015 | Date Printed: 6/2/2015 | Last Revised: 6/2/2015 | 5:50:03 PM | | |
| Drawn By: Cody Richardson | For: | SO: | Pg. 2 OF 2 | | |

NOTES:

- 1) Verify that each component requiring or supplying power has been configured for proper system voltage before applying power.
- 2) All wires to be 18 awg 100' max unless otherwise noted on drawing. Refer to manufacturers instructions for proper wire gauge on any power supply, electric device or electrified lock hardware. Manufacturers requirements take precedence.
- 3) All line voltage power to be I/A/W local electrical code.
- 4) All low voltage wires to be stranded copper unless superseded by local electrical code or electric device manufacturer.
- 5) It is considered good electrical practice to run spare wires at any location that may be difficult to access after construction.

These drawings are the sole and exclusive property of Special Projects Group and contain sensitive privileged or confidential information which may be used only for its benefit. The disclosure of these drawings to unauthorized persons is strictly prohibited. This document and all copies must be returned upon demand.
COPYRIGHT © 2016 SPECIAL PROJECTS GROUP, INC.

FOR REFERENCE ONLY
This drawing is not a substitute for qualified field technicians. One hour of telephone support is available without charge.



**Unsecure Side
(Pull Side)**

**Secure Side
(Push Side)**

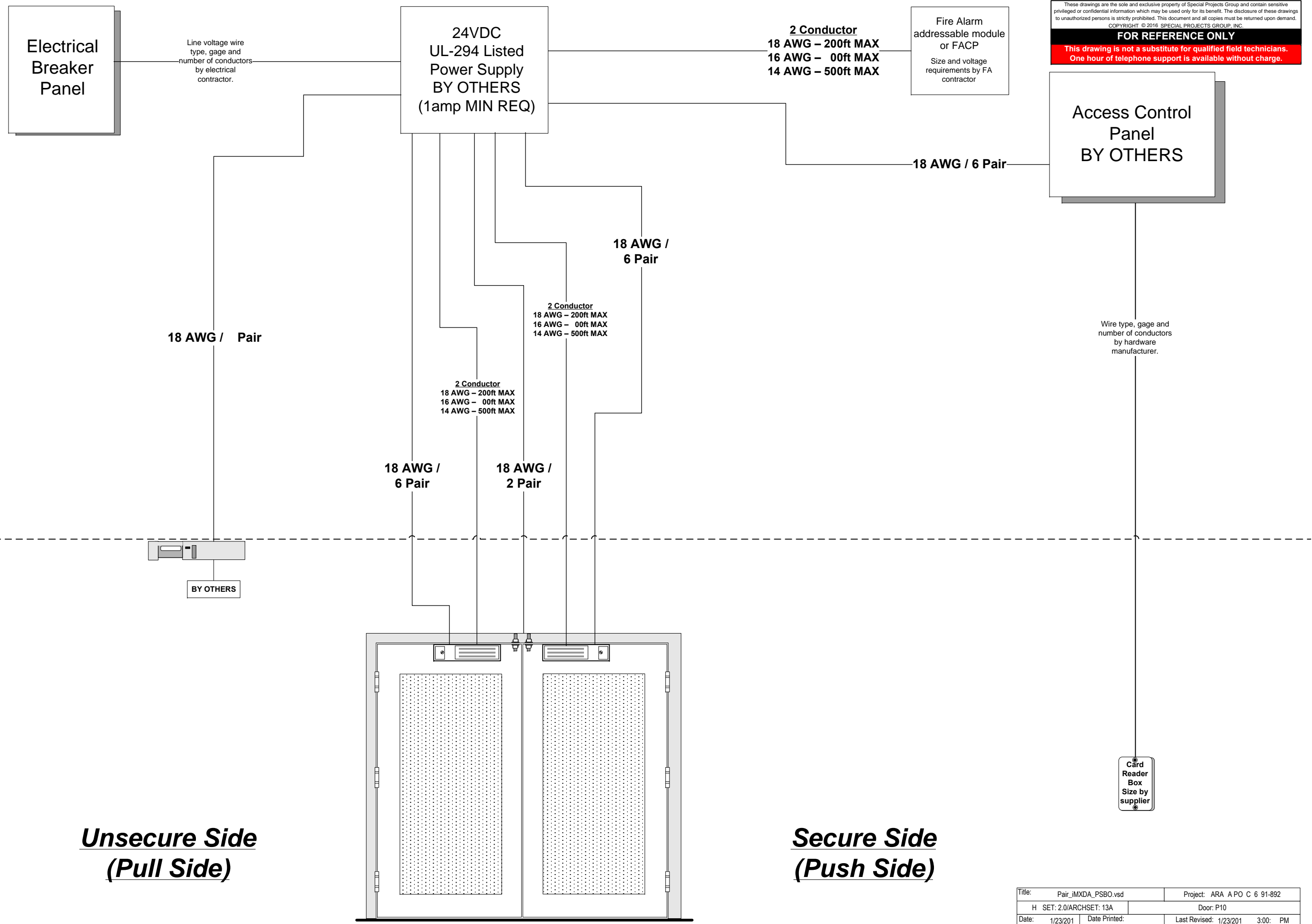
Function Statement:

- From secure side - locked condition:** Delayed egress by pushing on door to invoke 15 second irreversible alarm delay. After 15 seconds, maglock power will release and egress permitted. Authorized egress by card reader to inhibit DE alarm and release maglock.
- From secure side - unlocked condition:** Delayed egress alarm to remain active and maglock secure unless alarm inhibited and maglock power released by access control system, active fire alarm event, or loss of utility power.
- From unsecure side - locked condition:** Free entry at all times from pull side of opening by request to exit motion sensor (by others) to inhibit delayed egress alarm and release maglock.
- From unsecure side - unlocked condition:** Free entry at all times from pull side of opening by request to exit motion sensor (by others) to inhibit delayed egress alarm and release maglock.
- General:** Upon fire alarm activation, delayed egress system power to be disconnected and immediate egress to be permitted without alarm.

| | |
|----------------------------|--|
| Title: Pair_iMXDA_PSB0.vsd | Project: ARA A PO C 6 91-892 |
| H SET: 2.0/ARCHSET: 13A | Door: P10 |
| Date: 1/23/2011 | Date Printed: Last Revised: 1/23/2011 3:00: PM |
| Drawn By: Cody Richardson | For: aras aras lass SO: 12 95 Pg: 1 OF 2 |

NOTES:

- 1) Verify that each component requiring or supplying power has been configured for proper system voltage before applying power.
- 2) All wires to be 18 awg 100' max unless otherwise noted on drawing. Refer to manufacturers instructions for proper wire gauge on any power supply, electric device or electrified lock hardware. Manufacturers requirements take precedence.
- 3) All line voltage power to be I/A/W local electrical code.
- 4) All low voltage wires to be stranded copper unless superseded by local electrical code or electric device manufacturer.
- 5) It is considered good electrical practice to run spare wires at any location that may be difficult to access after construction.



These drawings are the sole and exclusive property of Special Projects Group and contain sensitive privileged or confidential information which may be used only for its benefit. The disclosure of these drawings to unauthorized persons is strictly prohibited. This document and all copies must be returned upon demand.
COPYRIGHT © 2016 SPECIAL PROJECTS GROUP, INC.
FOR REFERENCE ONLY
This drawing is not a substitute for qualified field technicians.
One hour of telephone support is available without charge.

Unsecure Side
(Pull Side)

Secure Side
(Push Side)

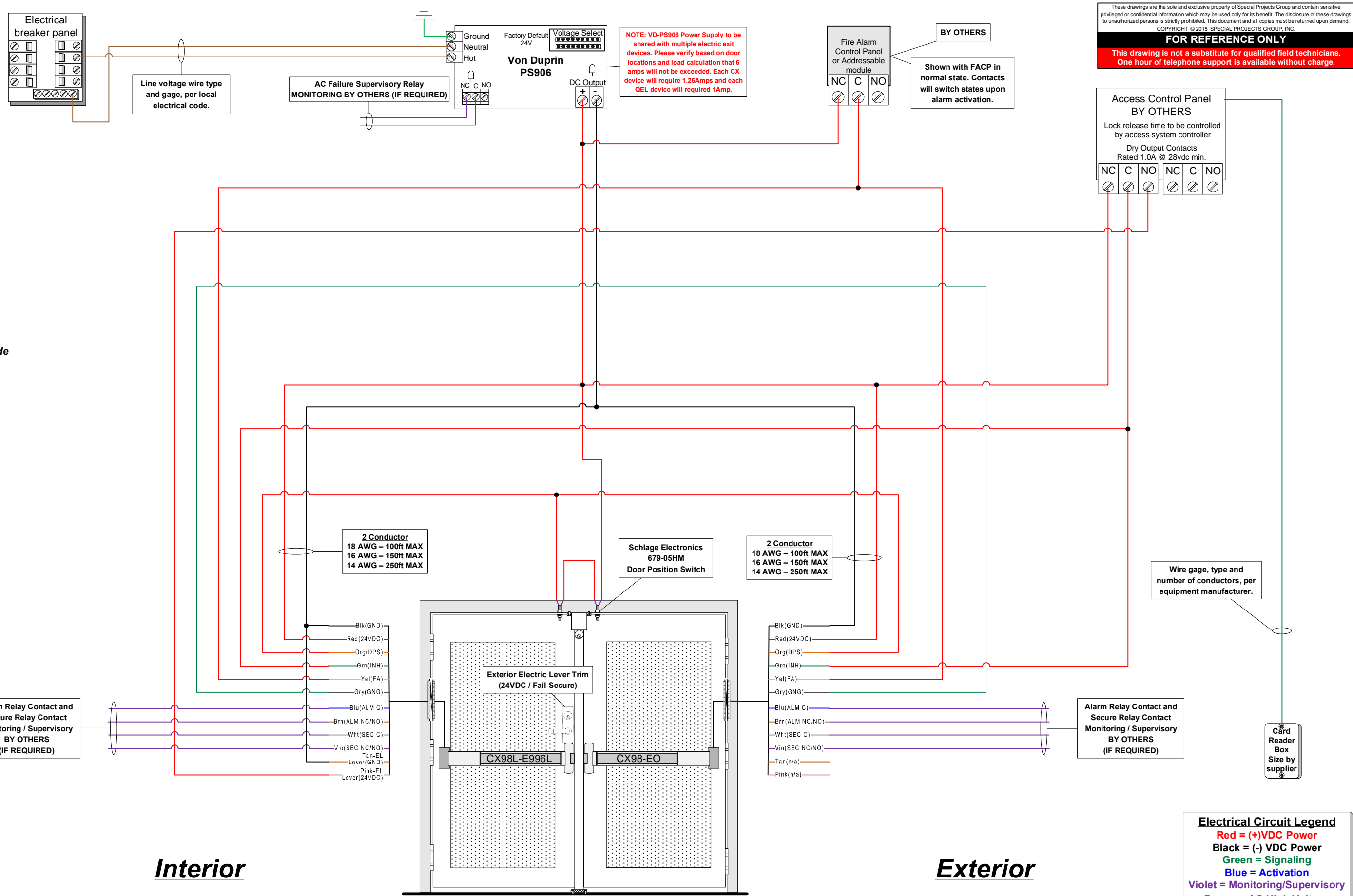
| | | | |
|-----------|---------------------|---------------|-------------------------------------|
| Title: | Pair_iMXDA_PSBO.vsd | Project: | ARA APO C 6 91-892 |
| H SET: | 2.0/ARCHSET: 13A | Door: | P10 |
| Date: | 1/23/201 | Date Printed: | 1/23/201 3:00: PM |
| Drawn By: | Cody Richardson | For: | aras aras lass SO: 12 95 Pg: 2 OF 2 |



Special Projects Group
(888) 284-4774

NOTES:

- 1) Verify that each component requiring or supplying power has been configured for proper system voltage before applying power.
- 2) All wires to be 18 awg 100' max unless otherwise noted on drawing. Refer to manufacturers instructions for proper wire gauge on any power supply, electric device or electrified lock hardware. Manufacturers requirements take precedence.
- 3) All line voltage power to be I/A/W local electrical code.
- 4) All low voltage wires to be stranded copper unless superseded by local electrical code or electric device manufacturer.
- 5) It is considered good electrical practice to run spare wires at any location that may be difficult to access after construction.



These drawings are the sole and exclusive property of Special Projects Group and contain sensitive privileged or confidential information which may be used only for its benefit. The disclosure of these drawings to unauthorized persons is strictly prohibited. This document and all copies must be returned upon demand.
COPYRIGHT © 2015, SPECIAL PROJECTS GROUP, INC.
FOR REFERENCE ONLY
This drawing is not a substitute for qualified field technicians.
One hour of telephone support is available without charge.

Electrical Circuit Legend
Red = (+)VDC Power
Black = (-) VDC Power
Green = Signaling
Blue = Activation
Violet = Monitoring/Supervisory
Brown = AC High Voltage

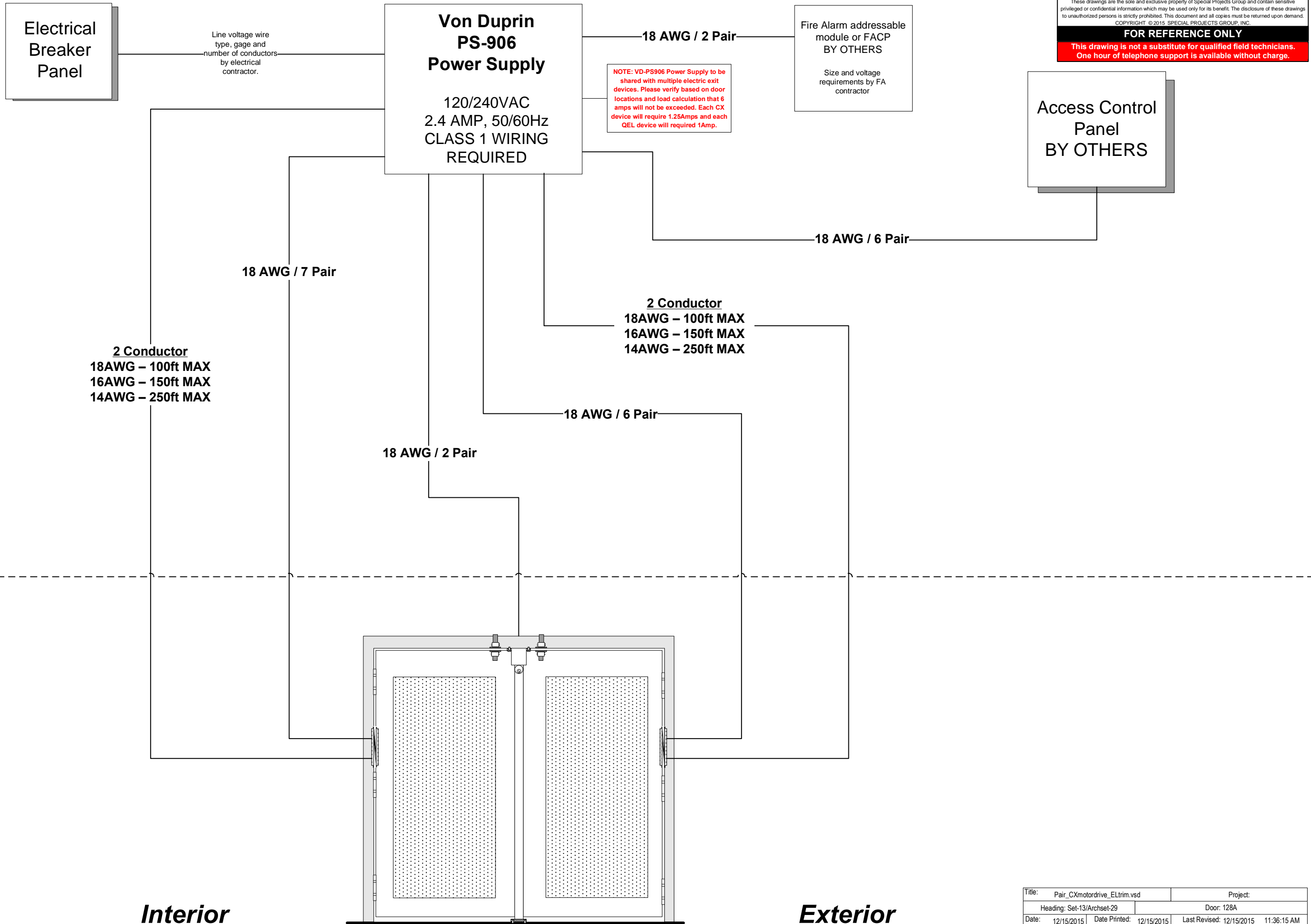
Function Statement:

- From exterior- locked condition:** Access by presenting valid credential to inhibited delayed egress device alarm and unlock active leaf exterior lever trim.
- From exterior - unlocked condition:** Door to remain locked and delayed egress exit device alarm active unless alarm inhibited/bypassed by access control system and exterior electric lever trim unlocked.
- From interior - locked condition:** Delayed egress by pushing exit device push pad to initiate irreversible 15 second delay with alarm. After 15 seconds, egress permitted via exit device.
- From interior - unlocked condition:** Delayed egress exit to remain armed unless bypassed or inhibited by keyswitch control or access control system command.
- General:** Upon fire alarm activation, delayed egress exit device alarm to deactivate and free immediate egress without alarm to be permitted. Exterior lever trim to be configured for fail-secure operation – locked during loss of power or fire alarm.

| | |
|-------------------------------------|--------------------------------------|
| Title: Pair_CXmotordrive_ELtrim.vsd | Project: |
| Heading: Set-13/Archset-29 | Door: 128A |
| Date: 12/15/2015 | Date Printed: 12/15/2015 |
| Drawn By: Cody Richardson | Last Revised: 12/15/2015 11:36:15 AM |
| For: | SO: |
| Pg: 1 OF 2 | |

NOTES:

- 1) Verify that each component requiring or supplying power has been configured for proper system voltage before applying power.
- 2) All wires to be 18 awg 100' max unless otherwise noted on drawing. Refer to manufacturers instructions for proper wire gauge on any power supply, electric device or electrified lock hardware. Manufacturers requirements take precedence.
- 3) All line voltage power to be I/A/W local electrical code.
- 4) All low voltage wires to be stranded copper unless superseded by local electrical code or electric device manufacturer.
- 5) It is considered good electrical practice to run spare wires at any location that may be difficult to access after construction.



These drawings are the sole and exclusive property of Special Projects Group and contain sensitive privileged or confidential information which may be used only for its benefit. The disclosure of these drawings to unauthorized persons is strictly prohibited. This document and all copies must be returned upon demand.
COPYRIGHT © 2015 SPECIAL PROJECTS GROUP, INC.
FOR REFERENCE ONLY
This drawing is not a substitute for qualified field technicians.
One hour of telephone support is available without charge.

| | |
|-------------------------------------|--------------------------------------|
| Title: Pair_CXmotordrive_ELtrim.vsd | Project: |
| Heading: Set-13/Archset-29 | Door: 128A |
| Date: 12/15/2015 | Date Printed: 12/15/2015 |
| Drawn By: Cody Richardson | Last Revised: 12/15/2015 11:36:15 AM |
| For: | SO: |
| | Pg 2 OF 2 |